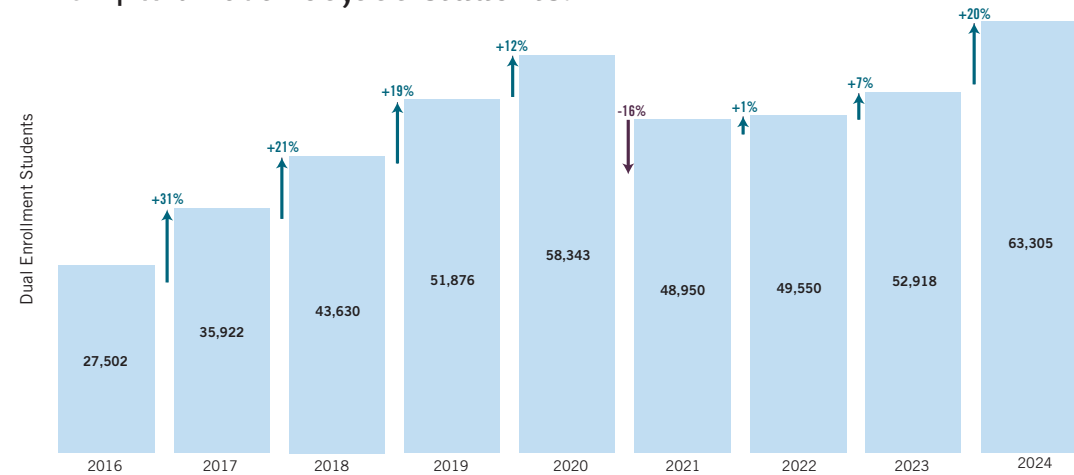
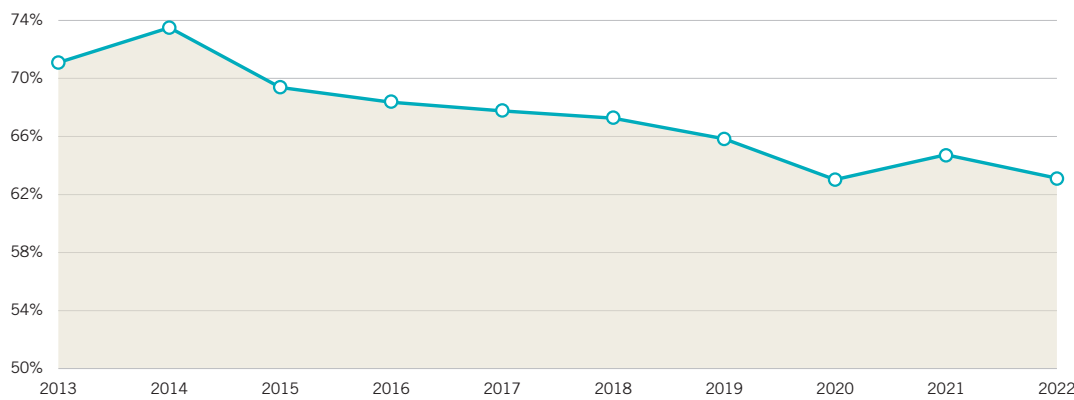


The number of **Georgia public high schoolers enrolling in dual enrollment** has continued to grow and reached an all-time high in 2024 with over **60,000 students**.



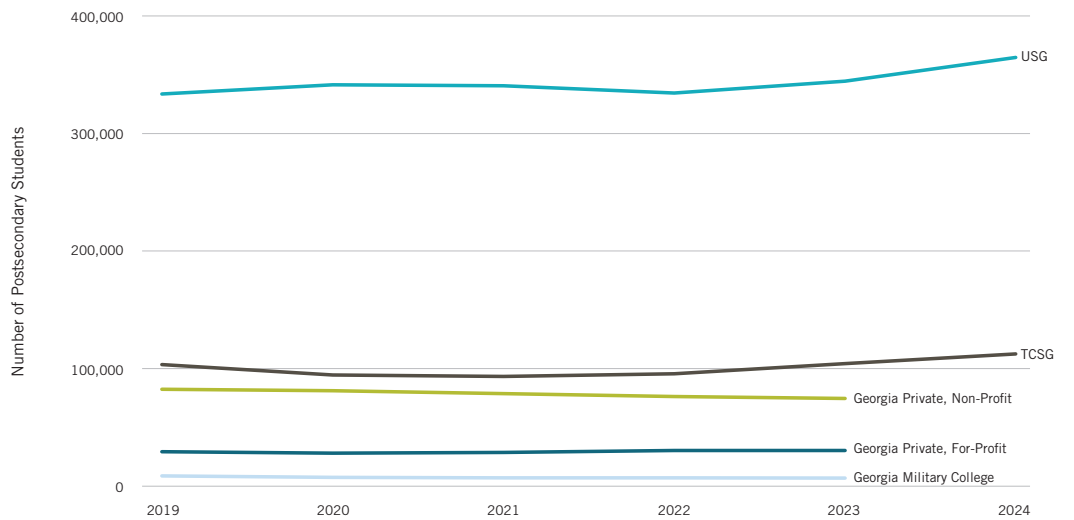
Source: Georgia Student Finance Commission

The rate at which **Georgia public high school graduates** are continuing their education by **enrolling in post-secondary institutions** has declined significantly in the past decade.



Source: Governor's Office of Student Achievement, GA AWARDS

The number of **postsecondary students** has increased by **25,000** since 2019; TCSG (+20K) and USG (+46K) drove growth while private non-profits declined.



Note: 2024 data not available for GMC institutions or private institutions | Sources: IPEDS, TCSG, USG



The **Georgia Workforce and Economic Resilience Center** is a hub of programs and services designed to support Georgia's continued economic and workforce competitiveness and assist our state, local, and regional partners on workforce and economic development strategy, decision-making, and implementation. In addition to the workforce conference, *center services include data and labor market analysis, professional development, economic impact and incentives modeling, workforce and economic development strategies, downtown and community development and planning, rural development, and more.*

The center is housed at the UGA Carl Vinson Institute of Government.

Georgia Data is a website developed by the UGA *Carl Vinson Institute of Government at the University of Georgia*. It contains state- and county-level data on a wide variety of topics, including economics, education, health, labor, and population, as well as links to other state data resources. This resource can be accessed at georgiadata.org.



To inquire about assistance or for more information on workforce development services at the Carl Vinson Institute of Government, please contact **Greg Wilson** at gjwilson@uga.edu or **Rebecca Hunt** at rcmciver@uga.edu.

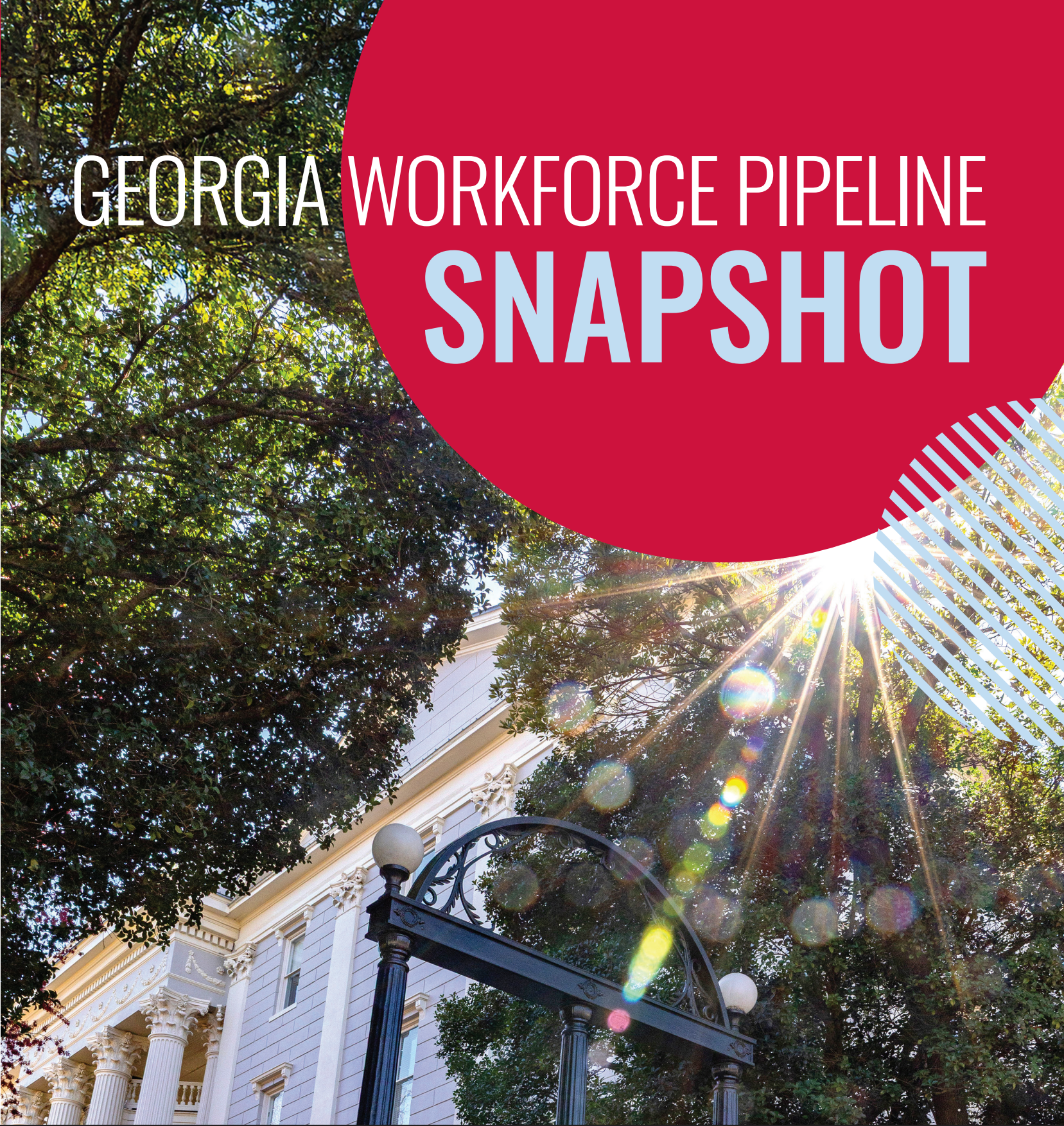


Georgia Workforce and Economic Resilience Center
Carl Vinson Institute of Government
UNIVERSITY OF GEORGIA

Project contributions by **Rebecca Hunt, Taylor Hafley, Greg Wilson, Madelyn Cantu, and Ashlee Tziganuk** of the **Carl Vinson Institute of Government** at the University of Georgia.

Editing by **Hannah Hussain**.
Data visualizations by **Linnet Namuli**.
Graphic design by **Rosa Zavala Castillo**.

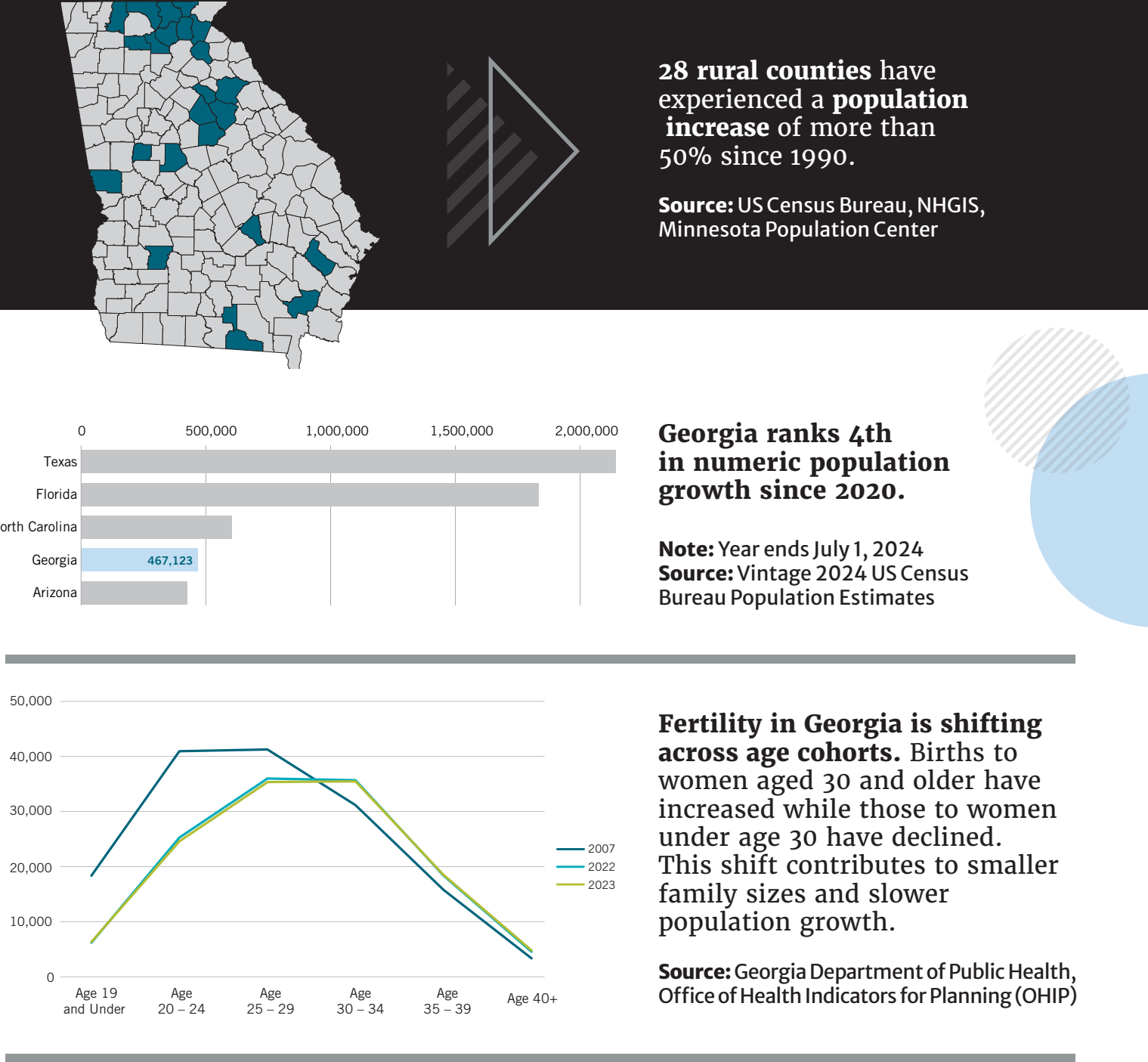
GEORGIA WORKFORCE PIPELINE SNAPSHOT



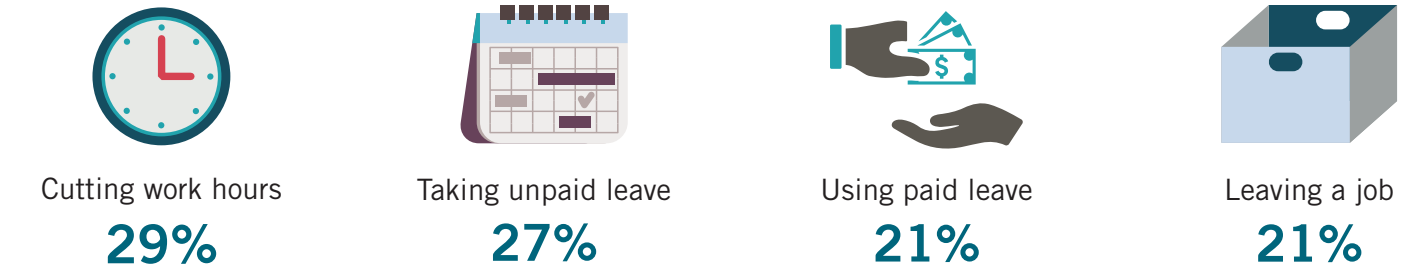
2025



Georgia Workforce and Economic Resilience Center
Carl Vinson Institute of Government
UNIVERSITY OF GEORGIA



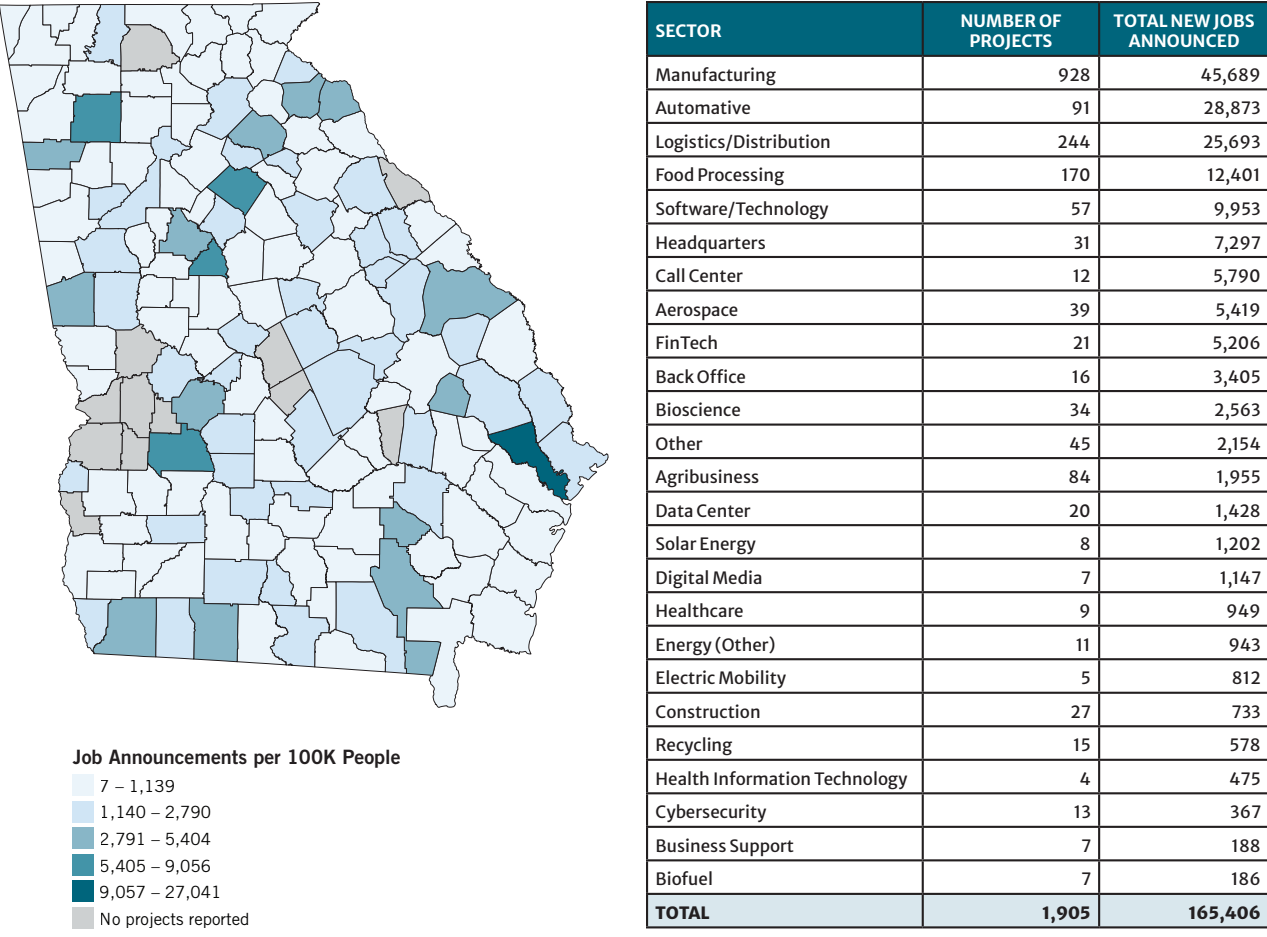
Changes in childcare arrangements have significant impacts on parents in Georgia. Over the survey period, 7% of Georgians (over 200,000) reported an inability to send a child to daycare or other childcare arrangements. To care for children parents took the following actions:



Note: Respondents could select multiple responses. | **Source:** US Census Bureau Household Pulse Survey, Cycle 09

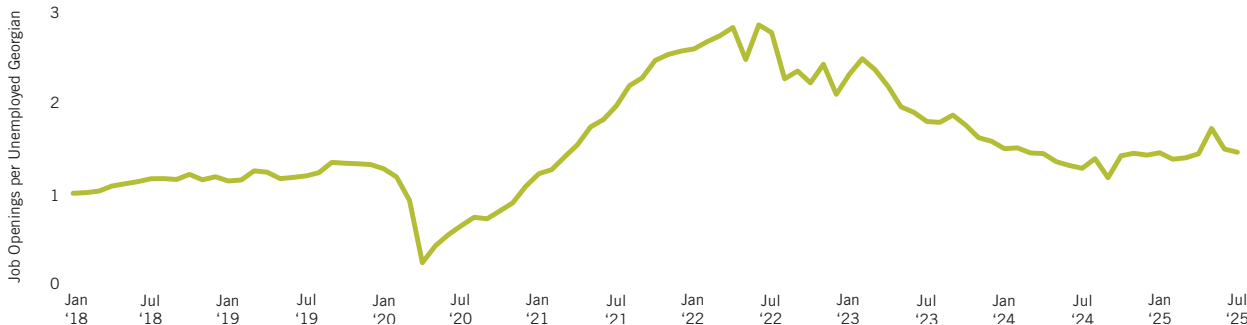
GEORGIA WORKFORCE PIPELINE SNAPSHOT LABOR MARKET

Between 2020 and 2025, Georgia saw nearly **2,000 economic development projects** totaling over **165,000 jobs** in a variety of sectors. These jobs were spread across the state with a number in smaller communities.



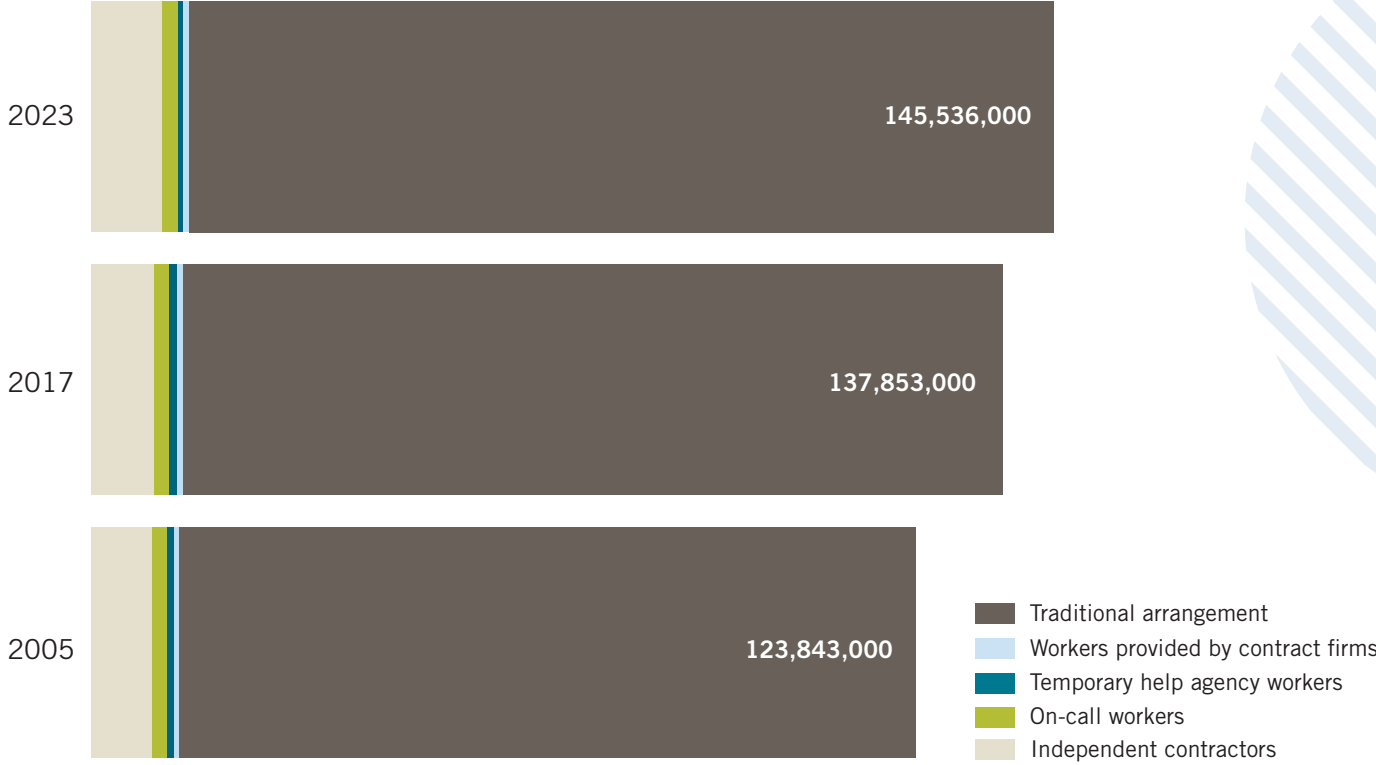
Note: These are both new location and expansion projects recorded by the Georgia Department of Economic Development. | **Source:** Georgia Department of Economic Development

Job openings per unemployed Georgian have returned to near pre-pandemic levels with less than 1.5 job per person in July of 2025.



Source: Georgia Department of Labor and US Bureau of Labor Statistics

While national data shows that the number of workers with alternative arrangements has increased, the category has remained relatively small (around 10%) in proportion to other work arrangements.



Source: US Bureau of Labor Statistics, Contingent and Alternative Employment Arrangements

Workers in retail trade and health care often earn less than the annual income needed for even a one-bedroom home, underscoring the challenges many employees face in securing housing.

Sources: Industry and annual median income data from US Census Bureau, American Community Survey, 2024. Income for bedroom data from the National Low Income Housing Coalition.

