

Directing the Dollar: How Data Tools are Used to Inform Broadband Grants Allocation

Eric McRae

Associate Director; Information Technology Outreach Services ,
Carl Vinson Institute of Government, University of Georgia



Georgia Data Innovation Hub
Carl Vinson Institute of Government
UNIVERSITY OF GEORGIA

Broadband data in Georgia

Eric McRae

Carl Vinson Institute of Government



Broadband Data at a Glance

Over 5,380,000 locations in the state

In 2022 approximately 8.7% of the state was unserved

There are over 50 providers that provide data to Broadband project

There are multiple federal and state grant programs that must be considered

Additional federal and state grant programs in the near future



First a glossary

FCC – Federal Communications Commission

GBDI – Georgia Broadband Deployment Initiative

NTIA - National Telecommunications and Information Administration

USDA - United States Department of Agriculture

BIP - Broadband Infrastructure Program

RDOF - Rural Digital Opportunity Fund

ARPA - American Rescue Plan Act of 2021

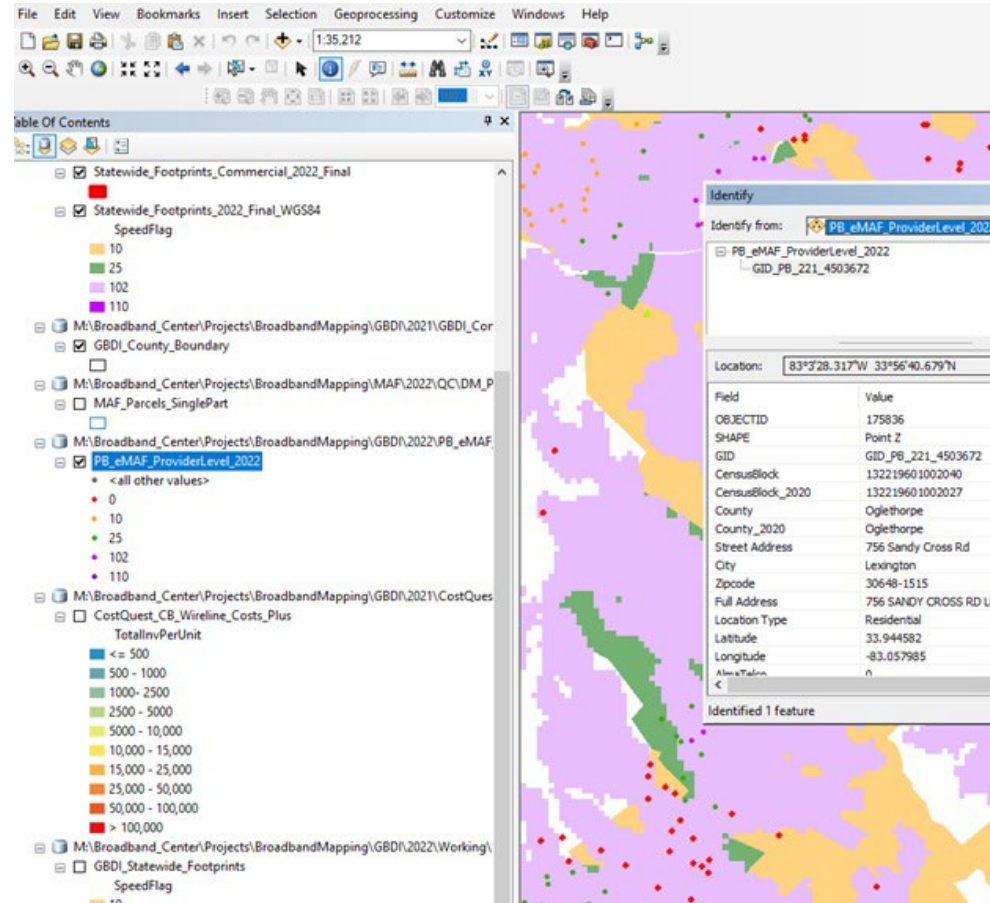
CPF - Capital Projects Fund

BEAD - Broadband Equity, Access, and Deployment



Multiple approaches

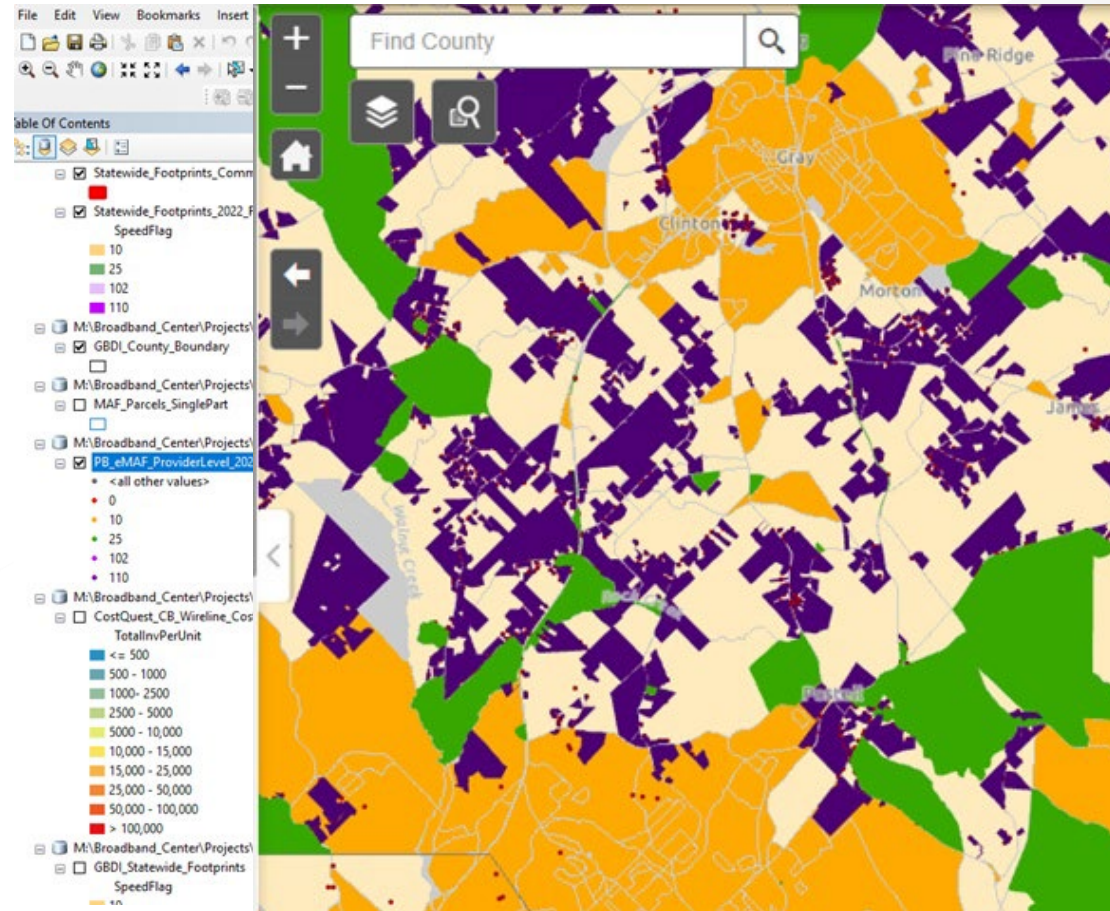
GIS maps to develop detailed metrics about each location



Multiple approaches

GIS maps to develop detailed metrics about each location

Web maps to present the data in a consumable fashion

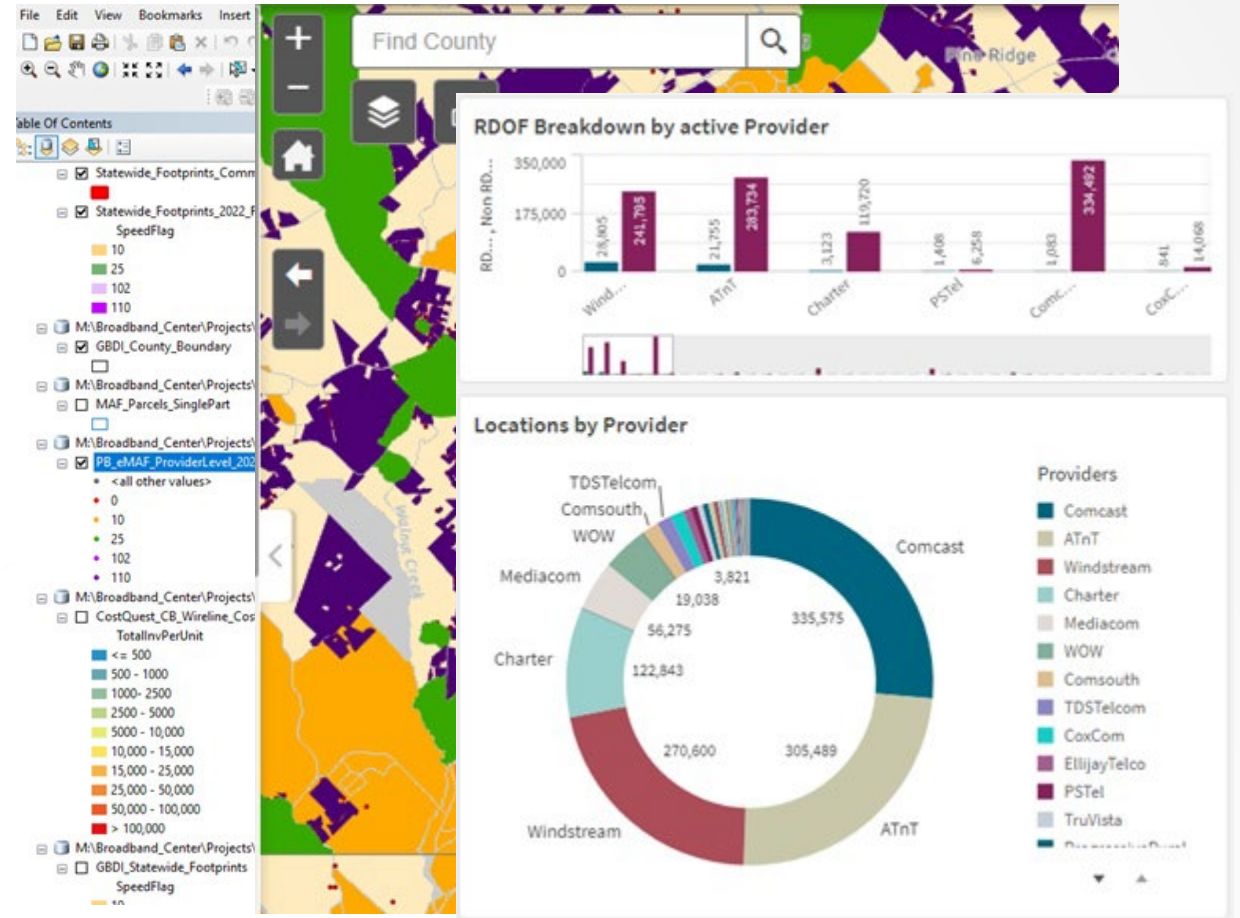


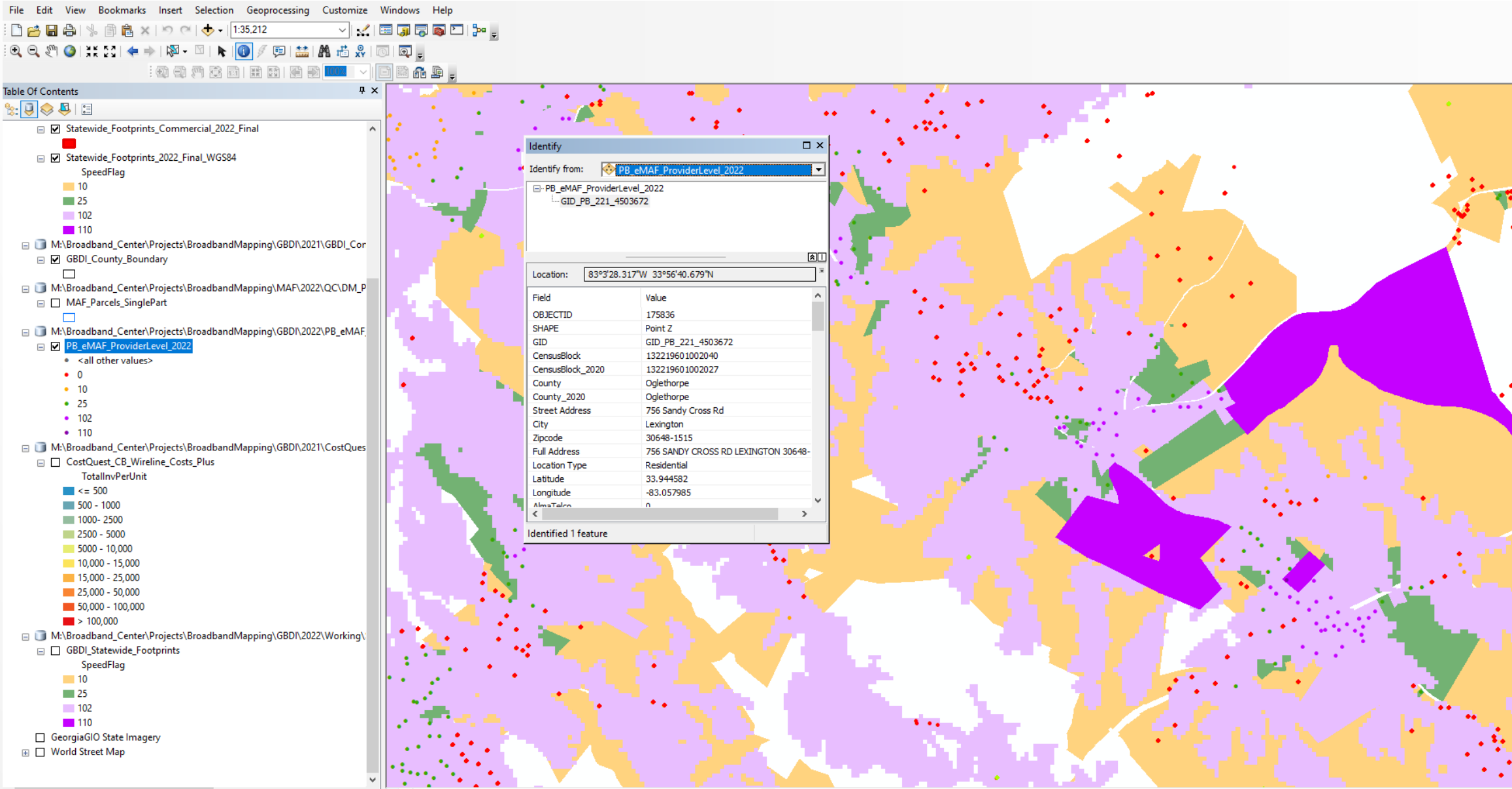
Multiple approaches

GIS maps to develop detailed metrics about each location

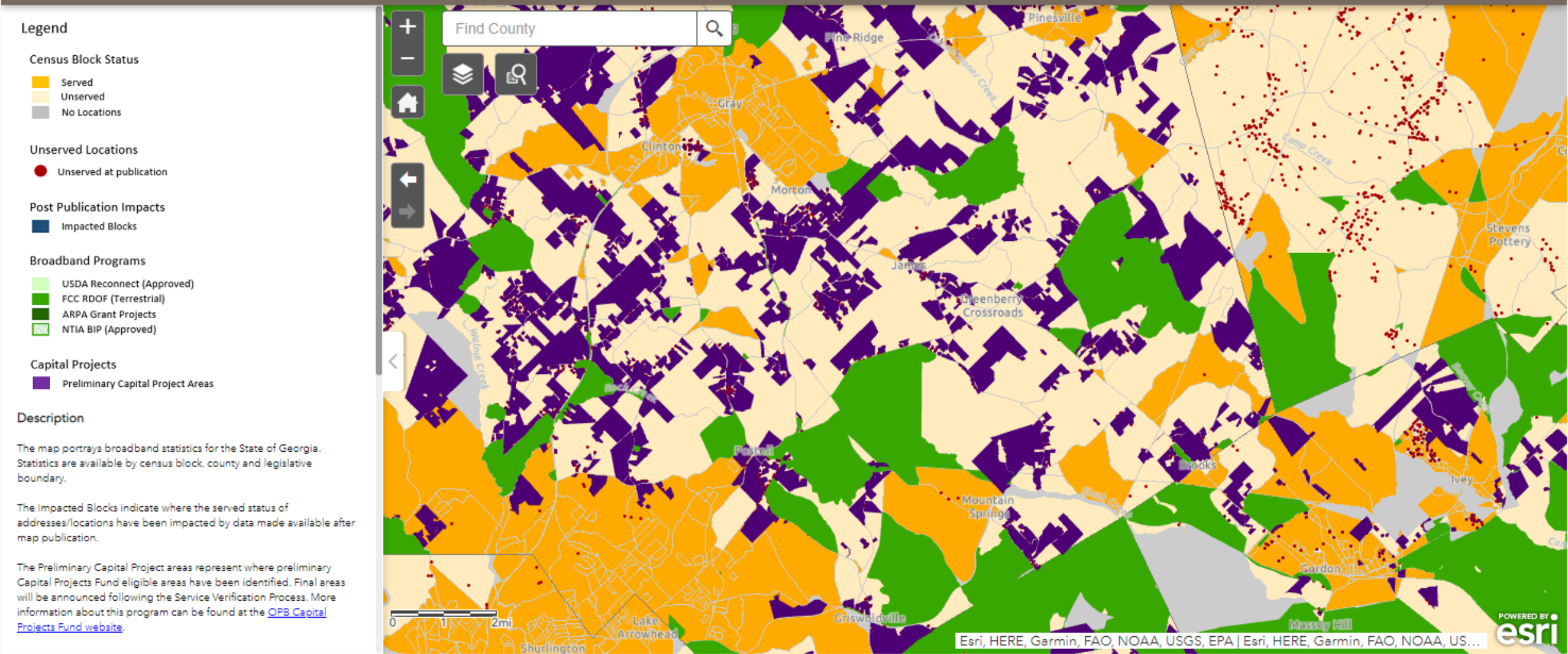
Web maps to present the data in a consumable fashion

Data visualization tools to allow fast analysis of volumes of data





Georgia Broadband Availability Map



Georgia Broadband Availability Map

Legend

Census Block Status

- Served
- Unserved
- No Locations

Unserved Locations

- Unserved at publication

Post Publication Impacts

- Impacted Blocks

Broadband Programs

- USDA Reconnect (Approved)
- FCC RDOF (Terrestrial)
- ARPA Grant Projects
- NTIA BIP (Approved)

Capital Projects

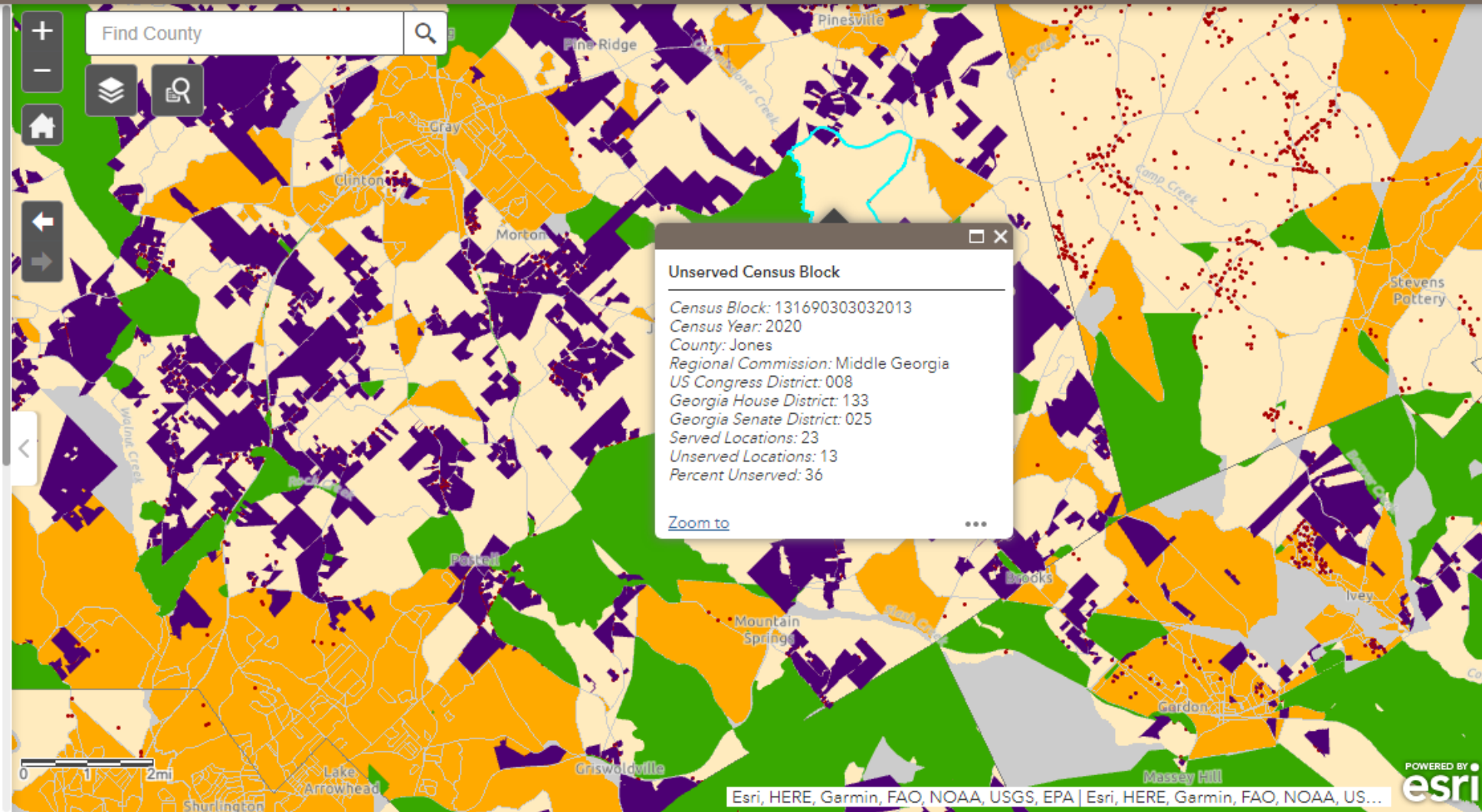
- Preliminary Capital Project Areas

Description

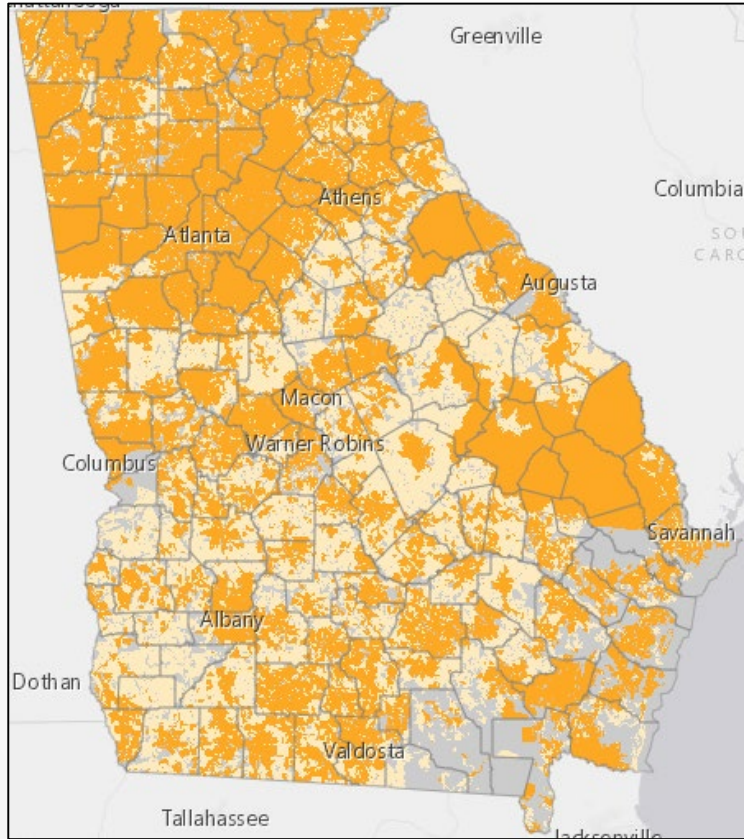
The map portrays broadband statistics for the State of Georgia. Statistics are available by census block, county and legislative boundary.

The Impacted Blocks indicate where the served status of addresses/locations have been impacted by data made available after map publication.

The Preliminary Capital Project areas represent where preliminary Capital Projects Fund eligible areas have been identified. Final areas will be announced following the Service Verification Process. More information about this program can be found at the [OPB Capital Projects Fund website](#).






Broadband Availability Map Comparison

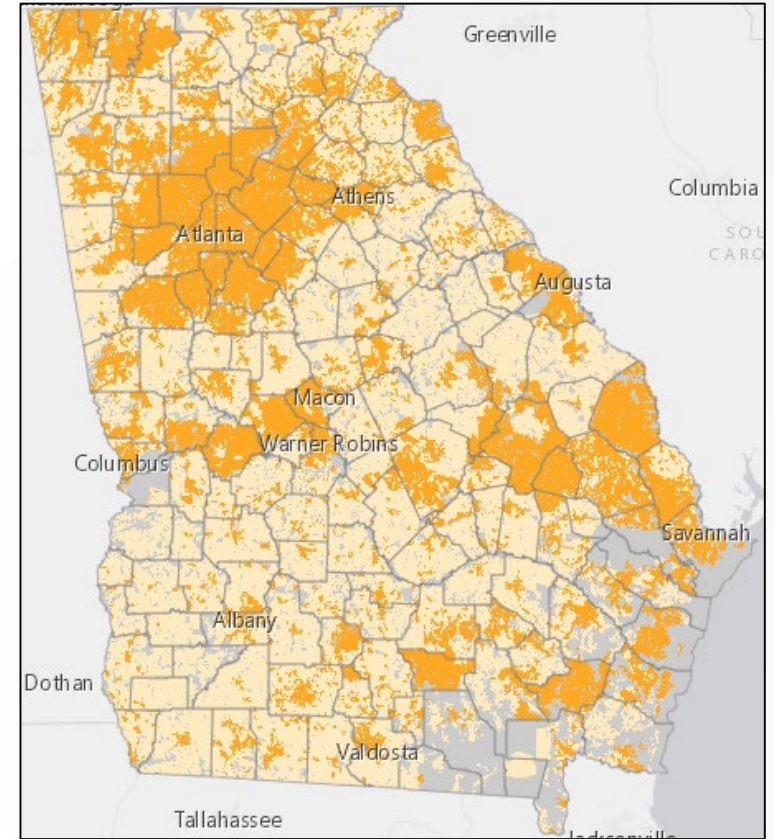


FCC Map
(Mapping Methodology: Census Block)

**ENHANCED
METHODOLOGY**



-  **Served**
-  **Unserved**
-  **Unpopulated**



Georgia Broadband Availability Map
(Mapping Methodology: Address Level)





Legend

GBDI Secure ARPA Grant Projects (Unverified)

ARPA Grant Projects

- 0
- 1
- 2

GBDI Secure NTIA BIP

NTIA BIP

-

GBDI Secure Provider Footprints Commercial Layer

GBDI Statewide Footprints (Commercial Only)

- 10 (10/1 Mbps)
- 25 (25/3 Mbps)
- 102 (100/20 Mbps)
- 110 (100/100 Mbps)

(1 of 5)

FCC RDOF

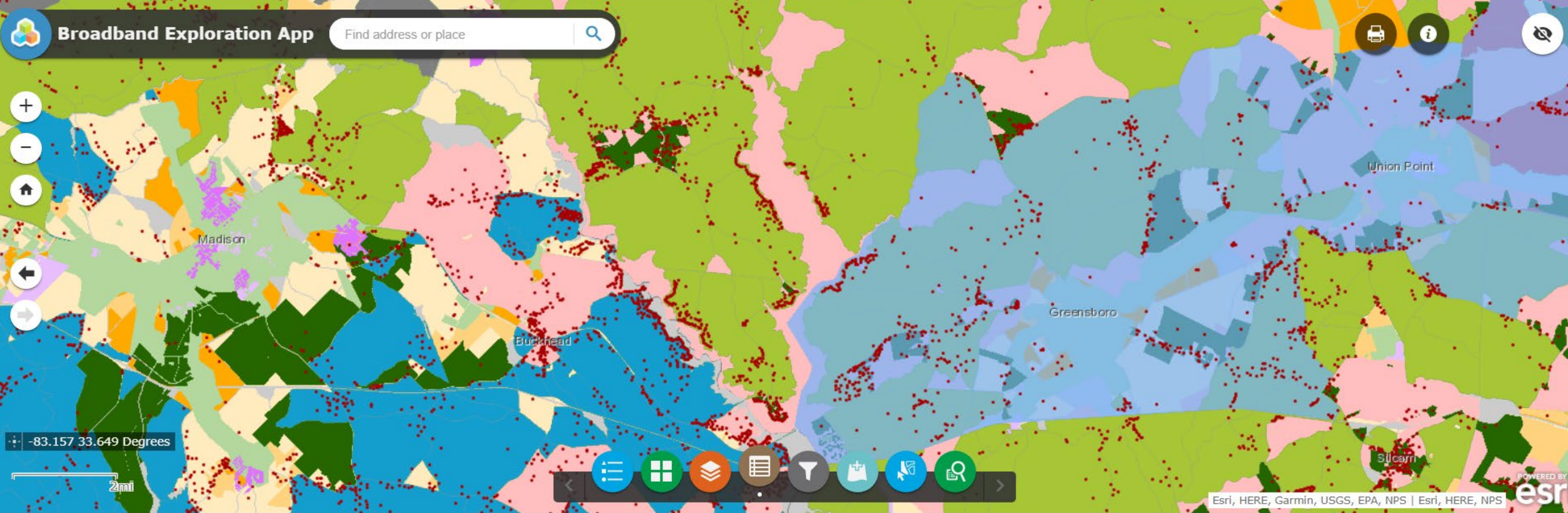
Census Block ID	131339503032020
Census Block Year	2010
County	Greene
Applicant_Name	Charter Fiberlink - Georgia, LLC
FRN	0009563222
PartialEligible	

Zoom to

-83.028 33.585 Degrees

2mi





GBDI Statewide Footprints X USDA Reconnect X **FCC RDOF (Terrestrial Technology) X**

Options Filter by map extent Zoom to Clear selection Refresh

Census Block ID	Census Block Year	County	Applicant_Name	FRN	PartialEligible
131339501001077	2010	Greene	Charter Fiberlink - Georgia, LLC	0009563222	
131339503031035	2010	Greene	Charter Fiberlink - Georgia, LLC	0009563222	
131339501001154	2010	Greene	Charter Fiberlink - Georgia, LLC	0009563222	
131339503032001	2010	Greene	Charter Fiberlink - Georgia, LLC	0009563222	

269 features 0 selected

Census Block	Census Block Group	FCC Status	GBDI Locations	County	One Georgia Status	GBDI Unserv...	GBDI Locations in Unserved CBs	GBDI Total Served Locations
130019501001000	130019501001	Unpopulated	No Locations	Appling	Eligible			
130019501001001	130019501001	Unpopulated	No Locations	Appling	Eligible			
130019501001002	130019501001	Unpopulated	No Locations	Appling	Eligible			
130019501001003	130019501001	Unpopulated	No Locations	Appling	Eligible			
130019501001004	130019501001	Unpopulated	No Locations	Appling	Eligible			
130019501001005	130019501001	Unserved	Unserved	Appling	Eligible	35	35	0
130019501001006	130019501001	Unpopulated	No Locations	Appling	Eligible			
130019501001007	130019501001	Unserved	Unserved	Appling	Eligible	2	2	0
130019501001008	130019501001	Unserved	Unserved	Appling	Eligible	1	1	0
130019501001009	130019501001	Unserved	Unserved	Appling	Eligible	14	14	0
130019501001010	130019501001	Unpopulated	No Locations	Appling	Eligible			
130019501001011	130019501001	Unserved	Unserved	Appling	Eligible	32	32	0

Regional Commission	US House
Georgia House	Georgia Senate
Total Population	Rural (DCH Definition)
City Name	CDBG

Total Locations Unserved
482,374

% Unserved
9.1%

Locations in GBDI Unserved C...
449,210

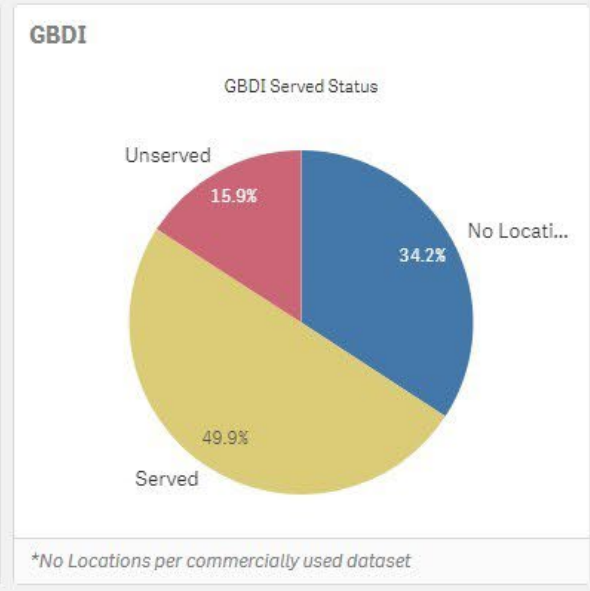
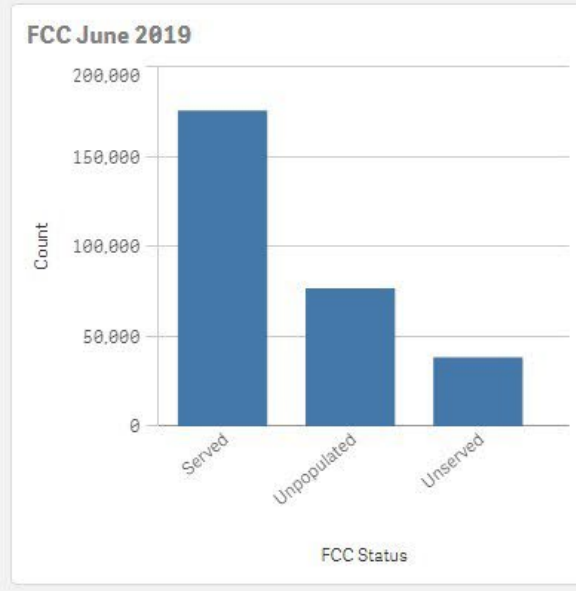
% of Total Unserved in Unserve...
8.4%

Total Served
4,837,562

% Served
90.9%

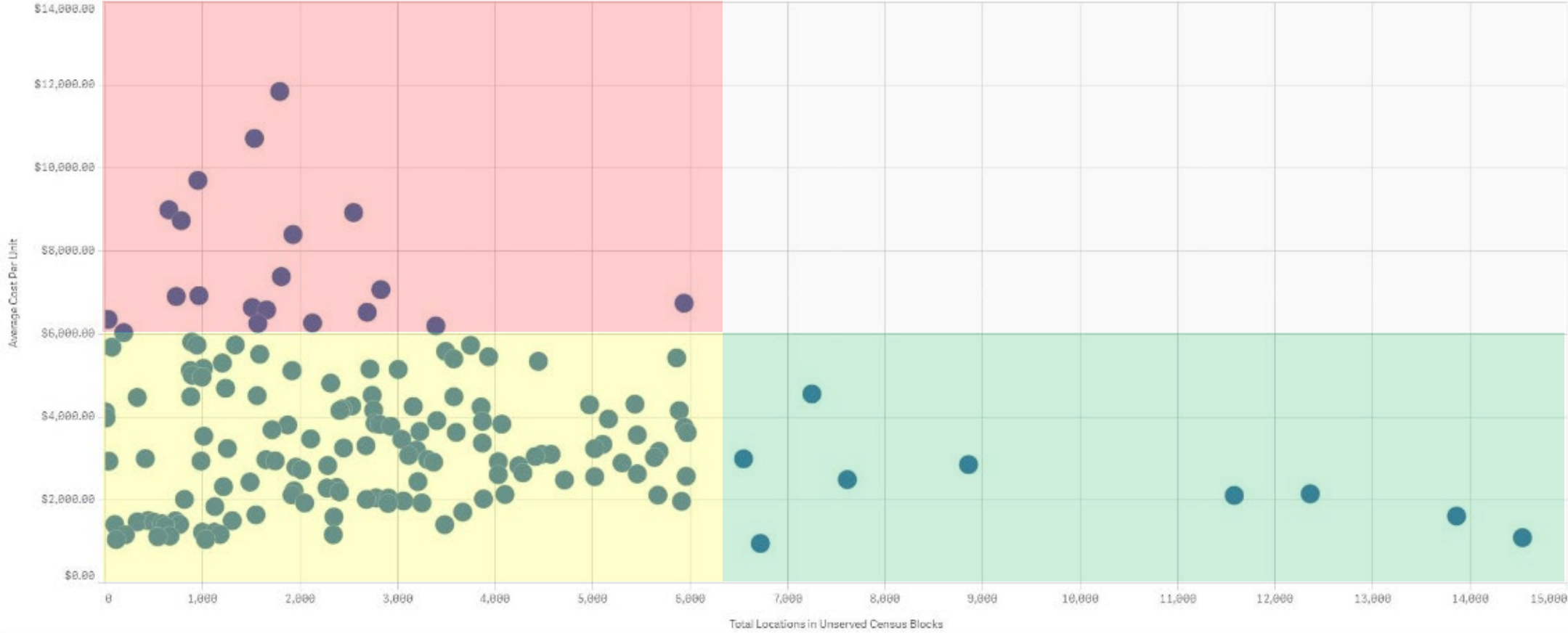
Total Locations
5,324,472

Unserved Census Blocks
9,019



Data Driven Decisions

Average Wireline Cost by Total Locations in Unserved Census Blocks by County



Provider Details

Provider: County: Location Type:

Speed: City:

Distinct Blocks
565

Distinct Providers
3

DIMGID								
GID	Max Speed Code	City	Zip Code	Full Street Address	Census Block ID	County	Location Type	
GID_PB_059_1418951	25	Winterville	30683	2130 Beaverdam Rd	132219602013006	Oglethorpe	Residential	
GID_PB_059_1418952	25	Winterville	30683	2122 Beaverdam Rd	132219602013006	Oglethorpe	Residential	
GID_PB_059_4387787	0	Winterville	30683	295 Double Bridges Rd	132219602011032	Oglethorpe	Residential	
GID_PB_059_4387844	0	Winterville	30683	1003 Walter Sams Rd	132219602012052	Oglethorpe	Residential	
GID_PB_059_4561272	0	Winterville	30683	1001 Walter Sams Rd	132219602012052	Oglethorpe	Residential	
GID_PB_059_4790398	0	Winterville	30683	1062 Walter Sams Rd	132219602012052	Oglethorpe	Residential	
GID_PB_133_5227421	10	Union Point	30669	3302 Maxeys Rd	132219603001192	Oglethorpe	Residential	
GID_PB_195_1038303	25	Colbert	30628	313 Farm Rd	132219602013012	Oglethorpe	Residential	
GID_PB_195_1038304	25	Colbert	30628	494 Farm Rd	132219602013010	Oglethorpe	Residential	
GID_PB_195_4009289	25	Colbert	30628	1139 Farm Rd	132219602013012	Oglethorpe	Residential	
GID_PB_195_5128729	25	Winterville	30683	912 Lem Edwards Rd	132219602013030	Oglethorpe	Residential	
GID_PB_195_5328629	25	Colbert	30628	649 Farm Rd	132219602013012	Oglethorpe	Residential	
GID_PB_195_5442240	25	Colbert	30628	741 Farm Rd	132219602013012	Oglethorpe	Residential	
GID_PB_221_938875	25	Lexington	30648	203 Harris Rd	132219602023032	Oglethorpe	Residential	
GID_PB_221_938876	25	Lexington	30648	18 Burning Tree Ct	132219601002011	Oglethorpe	Residential	
GID_PB_221_938877	25	Lexington	30648	77 Emerald Green Dr	132219601002011	Oglethorpe	Residential	
GID_PB_221_938878	10	Lexington	30648	55 Gordon Rd	132219602023063	Oglethorpe	Residential	
GID_PB_221_938879	10	Lexington	30648	591 Lexington Carlton Rd	132219602023063	Oglethorpe	Residential	
GID_PB_221_938880	10	Lexington	30648	565 Lexington Carlton Rd	132219602023063	Oglethorpe	Residential	
GID_PB_221_938881	25	Lexington	30648	722 Lexington Carlton Rd	132219602021000	Oglethorpe	Residential	
GID_PB_221_938882	25	Lexington	30648	160 Lexington Carlton Rd	132219602021007	Oglethorpe	Residential	
GID_PB_221_938883	25	Lexington	30648	29 Walden Ln	132219602021007	Oglethorpe	Residential	
GID_PB_221_938884	25	Lexington	30648	65 Fairground Rd	132219602021007	Oglethorpe	Residential	
GID_PB_221_938885	25	Lexington	30648	51 Fairground Rd Lot 3	132219602021007	Oglethorpe	Residential	
GID_PB_221_938886	25	Lexington	30648	81 Fairground Rd	132219602021007	Oglethorpe	Residential	
GID_PB_221_938887	25	Lexington	30648	83 Collins Ave	132219602021007	Oglethorpe	Residential	

Speed		
GID	Provider	Speed
GID_PB_059_1418951	Windstream	25
GID_PB_059_1418952	Windstream	25
GID_PB_133_5227421	Windstream	10
GID_PB_195_1038303	Windstream	25
GID_PB_195_1038304	Windstream	25
GID_PB_195_4009289	Windstream	25
GID_PB_195_5128729	Windstream	25
GID_PB_195_5328629	Windstream	25

Locations as reported by Providers	
Provider	Provider Reported Locations
Totals	6,980
Windstream	5,260
Charter	1,667
Relyant	53

A location may be reported by multiple providers

GBDI Location Counts	
County	Distinct Locations
Totals	7,490
Oglethorpe	7,490

Locations are based on the commercially purchased MAF

Provider Focus

Provider

ProjectID

GrantStatus

RDOF

Served_Status

...

This sheet is a Provider focused set of visuals to help identify RDOF and Served status by Providers and Projects, as well as identify key Census Blocks or locations of interest.

Filters on the left are used to slice data by relevant dimensions. Selections can also be made directly from visuals, and they remain selected, until cleared, even while navigating between sheets.

Projects

283

Providers

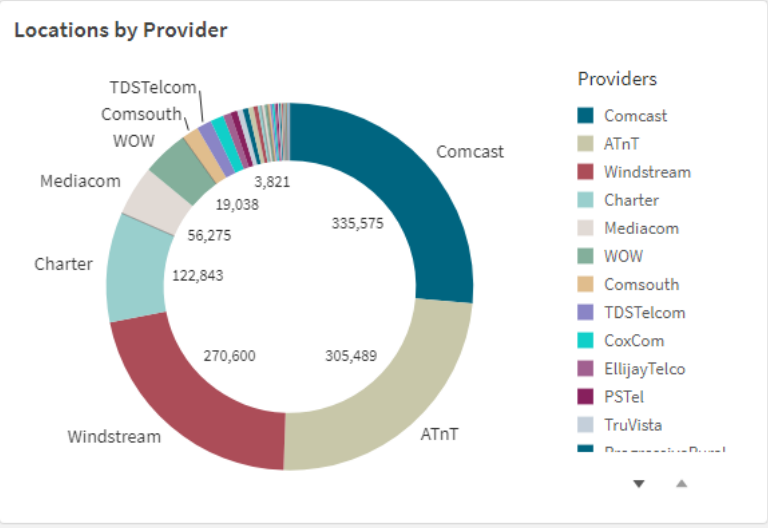
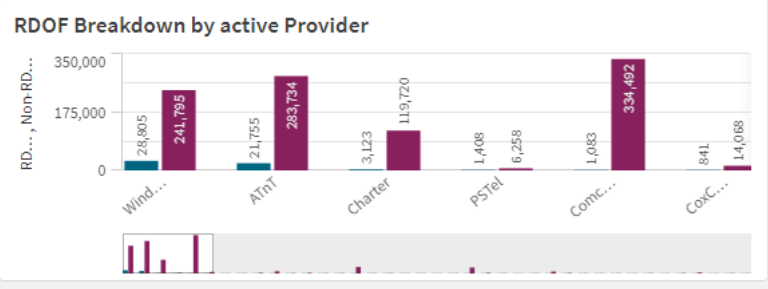
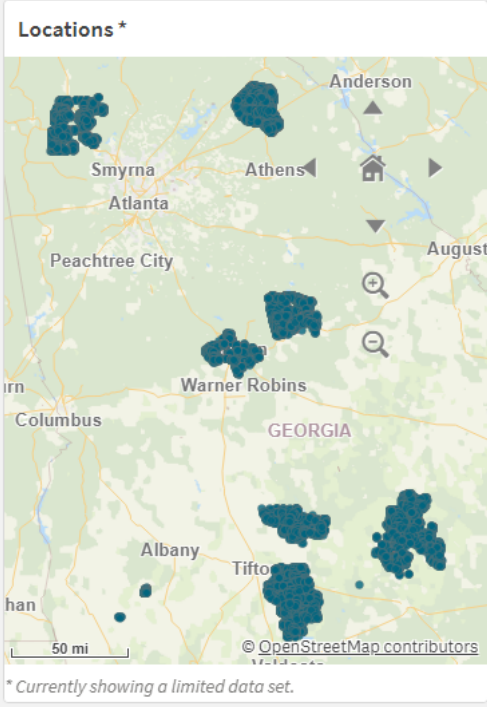
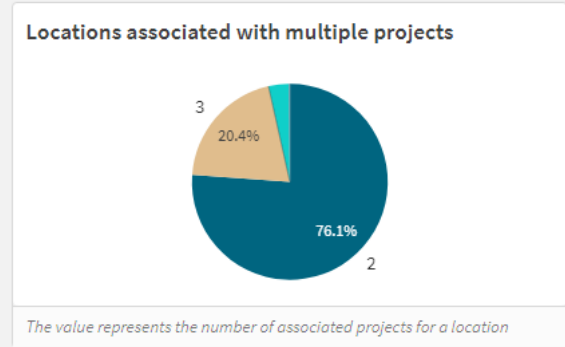
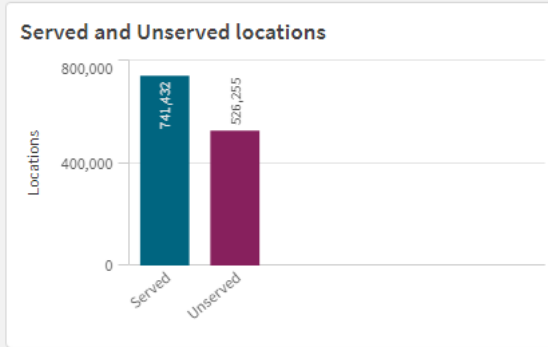
39

Locations

993,803

Census Blocks

56,937



RDOF and Served Status by Provider and Project

Provider	Non-RDOF		RDOF	
	Served	Unserved	Served	Unserved
AlmaTelco	5,601	326	30	-
GA-0005312-1	2,809	326	-	-
GA-0010491	2,507	-	28	-
GA-0010538	278	-	2	-
GA-0011124	7	-	-	-
ATnT	226,429	57,305	1,814	19,941
GA-0005312-1	-	3	-	-
GA-0005312-3	-	13	-	-
GA-0005312-6	19	-	-	-
GA-0005312-7	87	595	-	-
GA-0005312-17	46	177	-	-
GA-0005312-22	73	40	-	-
GA-0005312-23	392	548	-	-
GA-0005312-24	964	3,551	-	169
GA-0005312-25	4	1,204	-	20
GA-0005312-26	267	243	-	-

Grant Overview

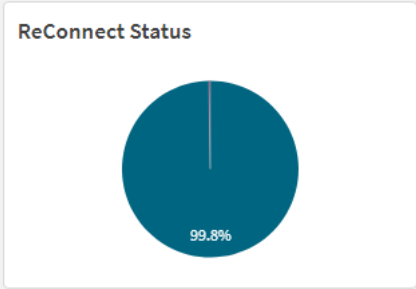
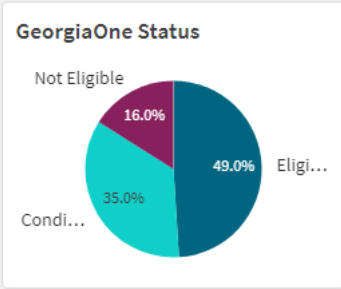
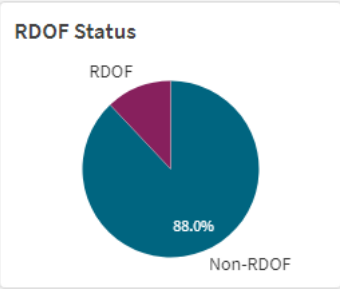
ProjectID

GrantStatus

RDOF

GeorgiaOne

...



Locations
993,803

Projects
283

Census Blocks
56,937

Grant Details

ProjectID	Grant Application Name	Grantee
GA-0010131	CITY OF ALLENTOWN	Allentown
GA-0010131	CITY OF ALLENTOWN	Allentown
GA-0008517	Altamaha EMC Last Mile Broadband Project	Altamaha Electric Membership Corporati
GA-0008517	Altamaha EMC Last Mile Broadband Project	Altamaha Electric Membership Corporati
GA-0008517	Altamaha EMC Last Mile Broadband Project	Altamaha Electric Membership Corporati
GA-0008517	Altamaha EMC Last Mile Broadband Project	Altamaha Electric Membership Corporati
GA-0008517	Altamaha EMC Last Mile Broadband Project	Altamaha Electric Membership Corporati
GA-0011538	Arabi, Georgia American Rescue Plan Act Broadband Grant Application	Arabi
GA-0011538	Arabi, Georgia American Rescue Plan Act Broadband Grant Application	Arabi
GA-0011538	Arabi, Georgia American Rescue Plan Act Broadband Grant Application	Arabi

This sheet is an overview of projects with a focus on grant funding overlap. Filters above are used to slice data by relevant dimensions. Selections can also be made directly from visuals, and they remain selected, until cleared, even while navigating between sheets.

RDOF
119,715

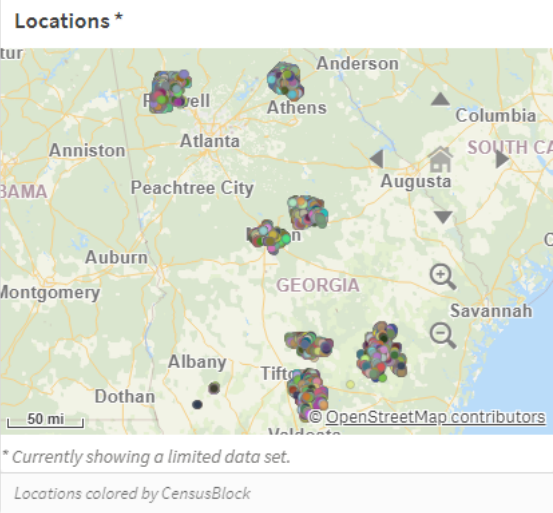
Non-RDOF
874,088

GeorgiaOne
Eligible
486,963

Not Eligible
159,327

ReConnect
2,338

Non-ReConnect
991,465



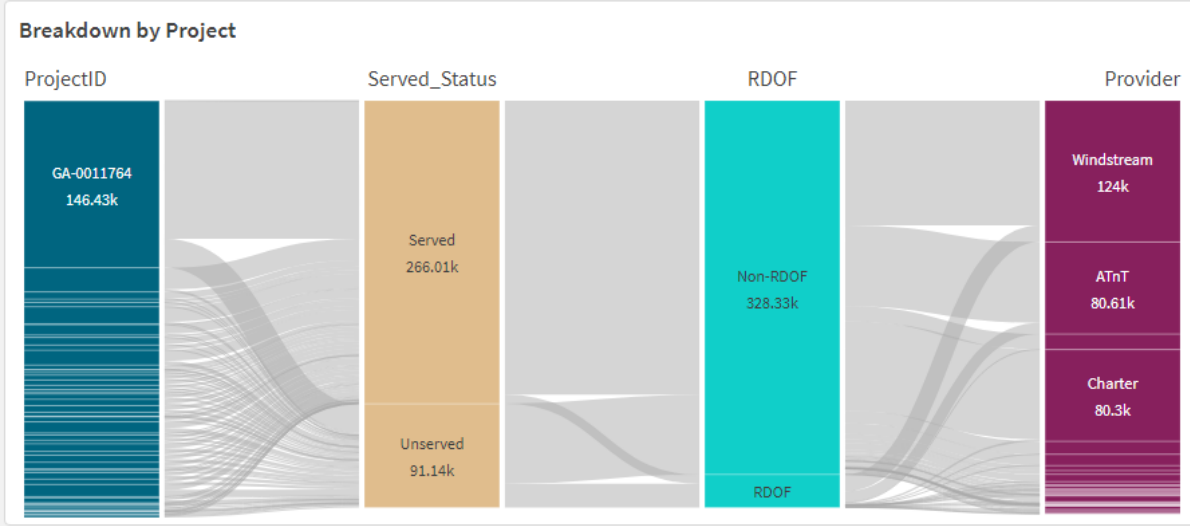
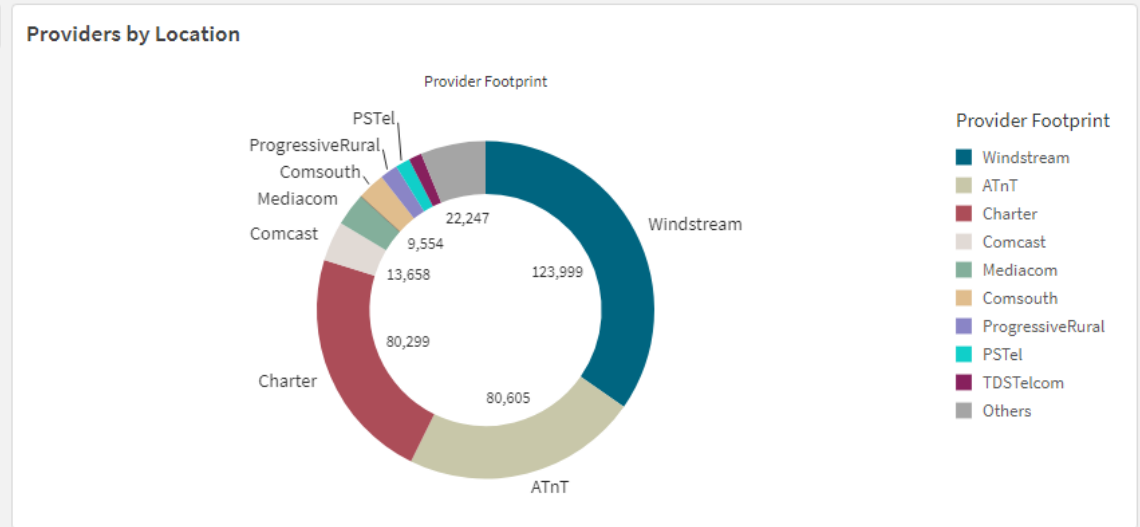
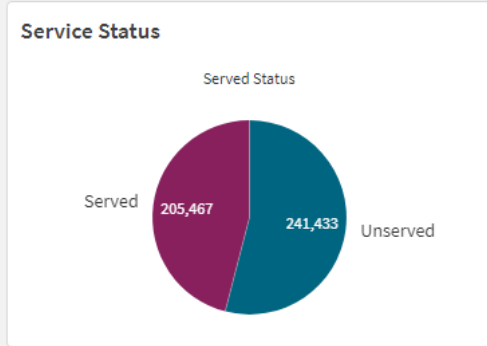
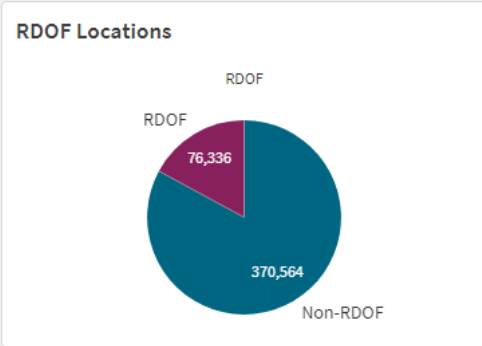
Location Details

ProjectID	GID	Full_Address	CensusBlock	RDOF	GeorgiaOne	ReConnect
GA-0005312-1	GID_PB_005_2021_1149093	223 Mimosa Rd Alma 31510-4608	1.3005970202201e+14	Non-RDOF	Eligible	Non-ReConnect
GA-0005312-1	GID_PB_005_2021_1149564	456 Friendship Church Rd Alma 31510-1648	1.3005970201202e+14	Non-RDOF	Eligible	Non-ReConnect
GA-0005312-1	GID_PB_005_2021_1149565	2159 W 4th Street Ext Alma 31510-7313	1.3005970201201e+14	Non-RDOF	Eligible	Non-ReConnect
GA-0005312-1	GID_PB_005_2021_1149594	913 N Pierce St Alma 31510-1708	1.3005970201302e+14	Non-RDOF	Eligible	Non-ReConnect
GA-0005312-1	GID_PB_005_2021_1149595	1286 GA Highway 32 E Alma 31510-7010	1.3005970100212e+14	Non-RDOF	Eligible	Non-ReConnect
GA-0005312-1	GID_PB_005_2021_1150044	307 E 3rd St Alma 31510-2301	1.3005970201302e+14	Non-RDOF	Eligible	Non-ReConnect
GA-0005312-1	GID_PB_005_2021_1150067	1020 GA Highway 32 E Alma 31510-3331	1.3005970100208e+14	Non-RDOF	Eligible	Non-ReConnect
GA-0005312-1	GID_PB_005_2021_1150075	160 Morris Dr Alma 31510-1939	1.3005970201208e+14	Non-RDOF	Eligible	Non-ReConnect
GA-0005312-1	GID_PB_005_2021_1150077	811 W 11th St Alma 31510-1922	1.3005970201208e+14	Non-RDOF	Eligible	Non-ReConnect
GA-0005312-1	GID_PB_005_2021_1150088	510 Chestnut Rd Alma 31510-4567	1.3005970202112e+14	Non-RDOF	Eligible	Non-ReConnect
GA-0005312-1	GID_PB_005_2021_1150089	121 Red River Ln Alma 31510-6434	1.3005970201202e+14	Non-RDOF	Eligible	Non-ReConnect
GA-0005312-1	GID_PB_005_2021_1150094	1230 GA Highway 32 E Alma 31510-7014	1.3005970100208e+14	Non-RDOF	Eligible	Non-ReConnect
GA-0005312-1	GID_PB_005_2021_1150095	506 W 6th St Alma 31510-2110	1.3005970201304e+14	Non-RDOF	Eligible	Non-ReConnect
GA-0005312-1	GID_PB_005_2021_1150096	2020 GA Highway 32 W Alma 31510-4365	1.3005970202101e+14	Non-RDOF	Eligible	Non-ReConnect

Served and Unserved

ProjectID Served_Status Provider RDOF County

Locations
391,593

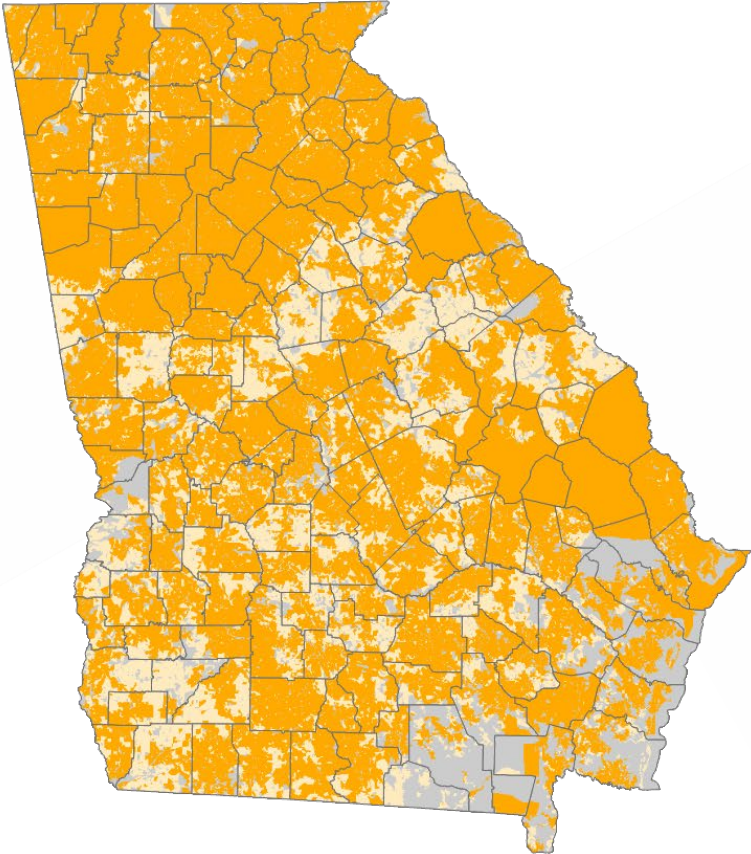


Provider service breakdown by Project and RDOF status

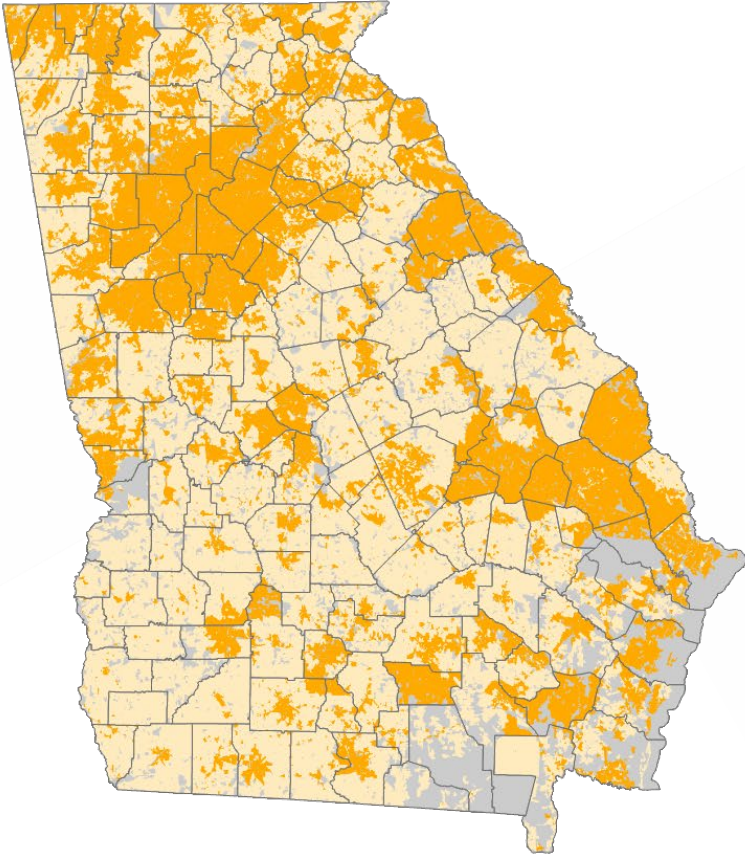
ProjectID RDOF Served Status Provider

ProjectID	Served	Unserved
GA-0005312-2	204	457
GA-0005312-9	302	223
GA-0005312-17	122	177
GA-0005312-19	975	849
GA-0005312-20	36	-
GA-0005312-22	2095	1278
GA-0005312-25	15	1224
GA-0005312-26	1372	355
GA-0005312-27	620	29
GA-0005312-33	1302	550

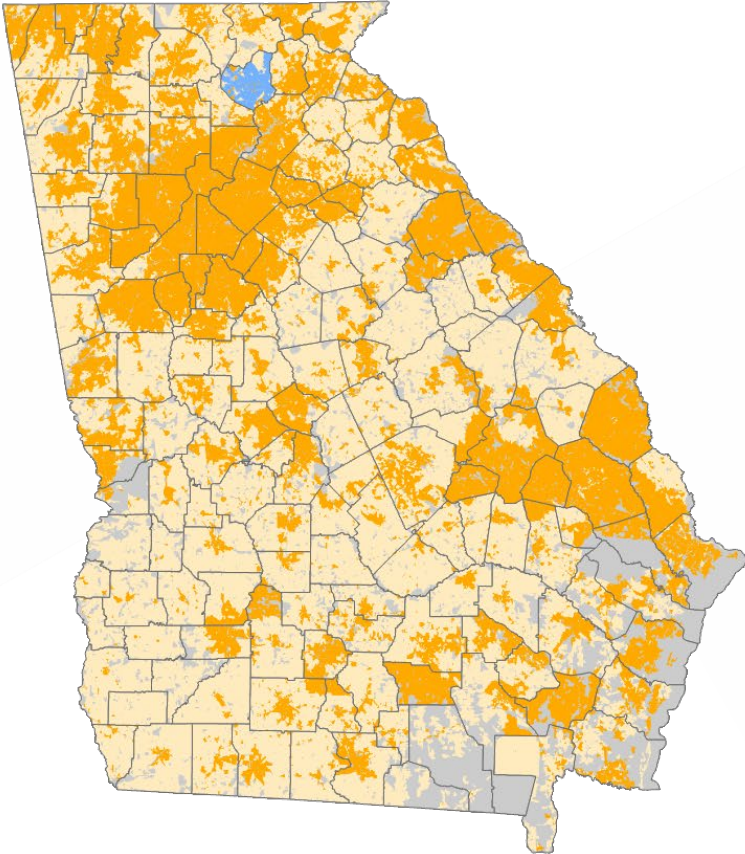
Georgia Coverage According to FCC



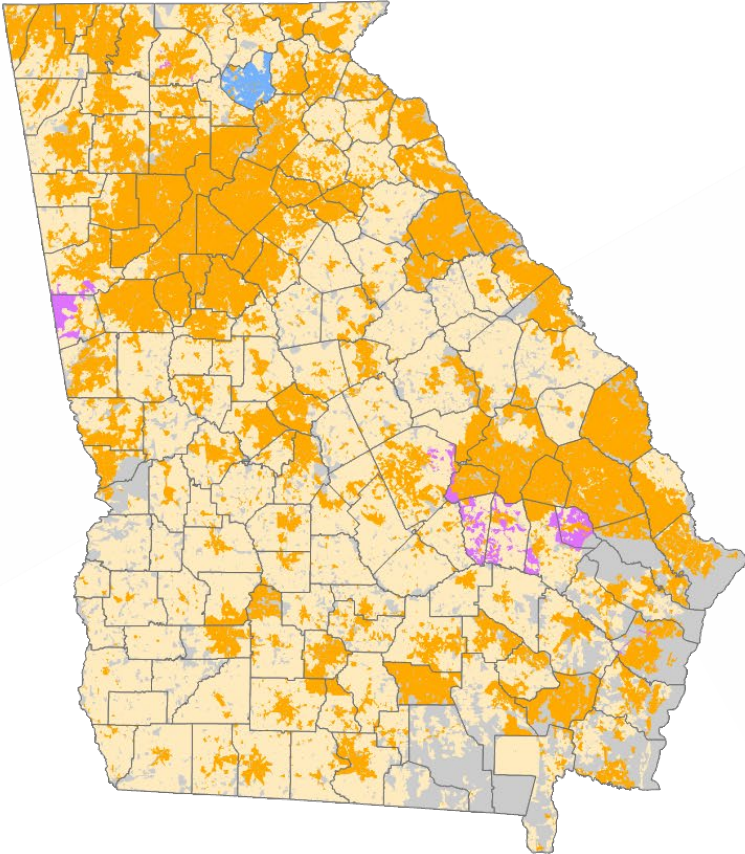
Georgia Coverage According to GBDI



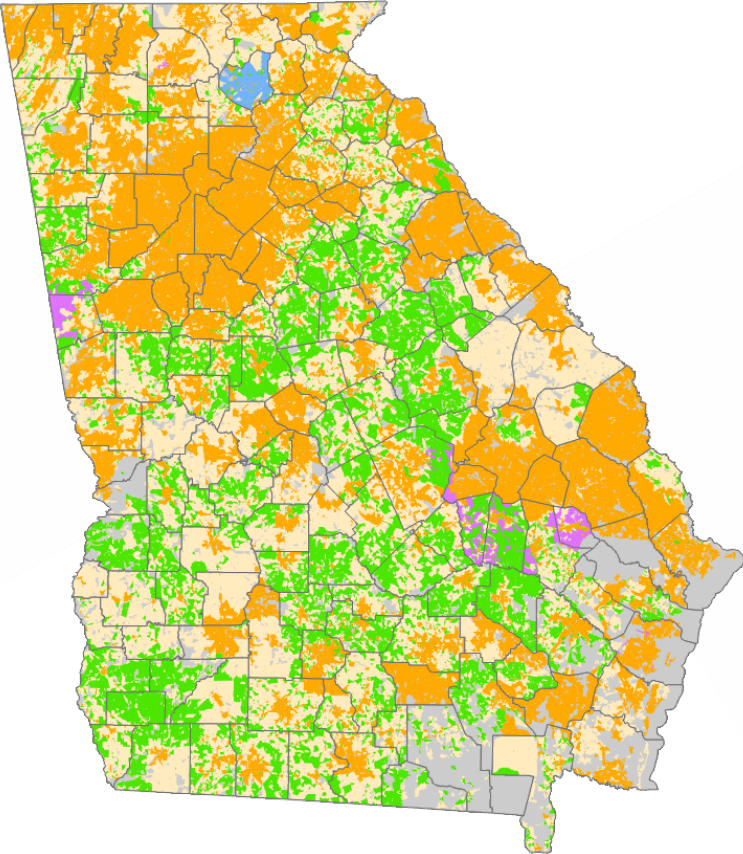
GBDI with NTIA BIP added



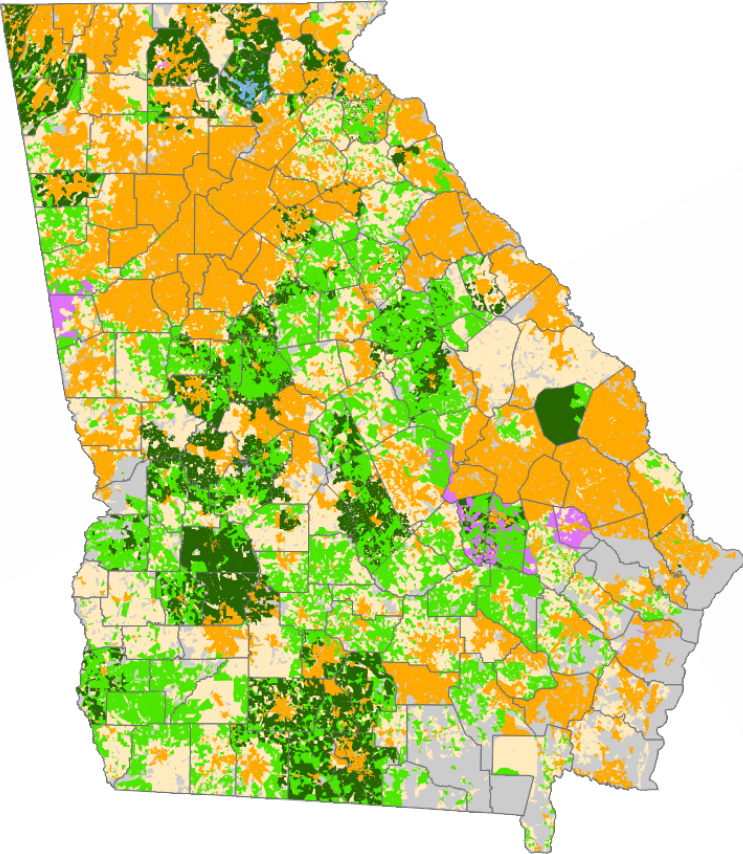
GBDI + NTIA + USDA Reconnect



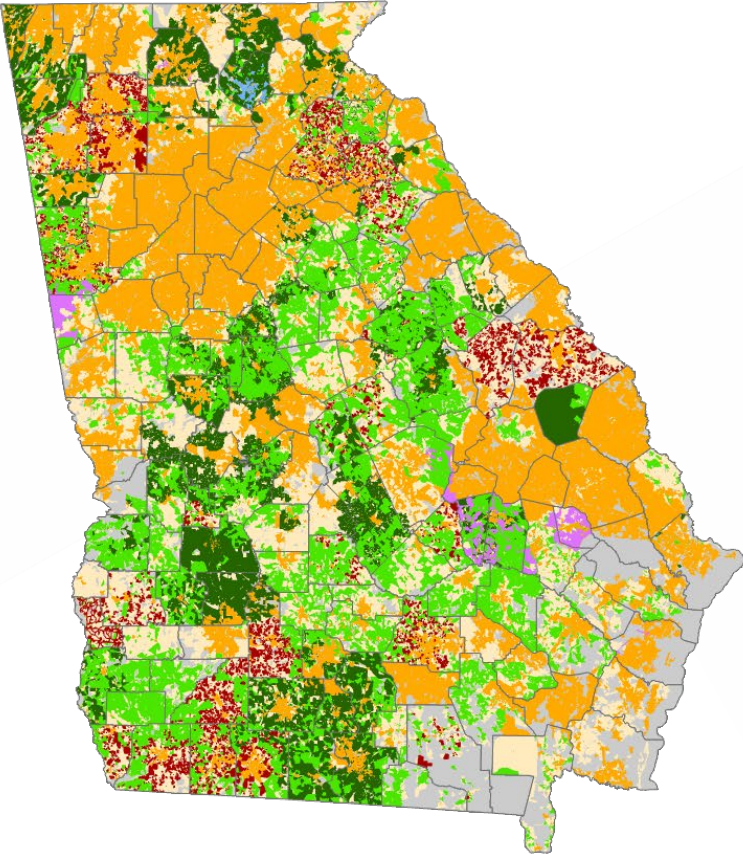
GBDI + NTIA + USDA + FCC RDOF



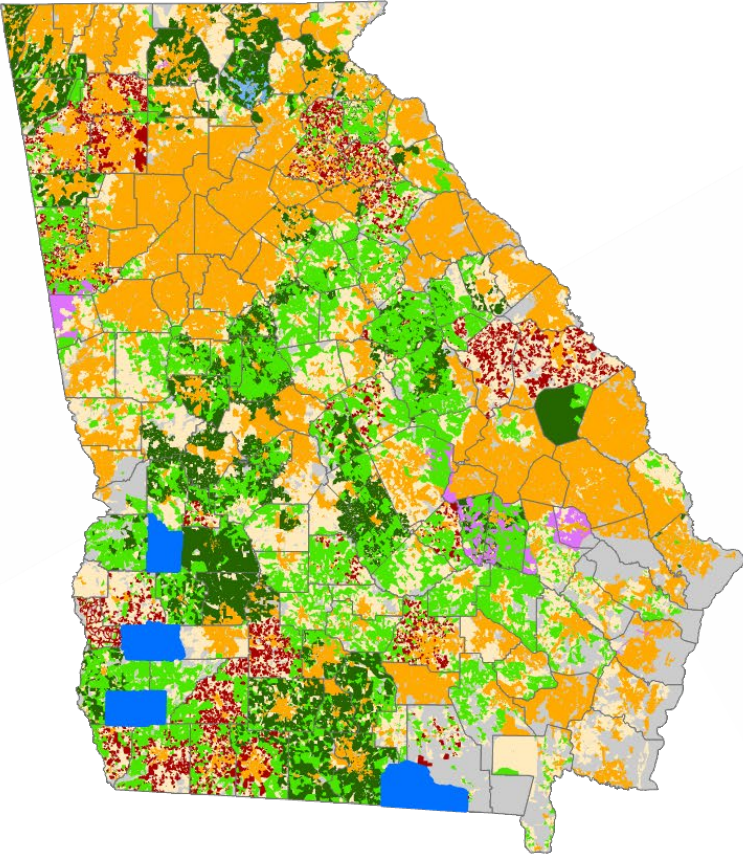
GBDI + NTIA + USDA + RDOF + ARPA



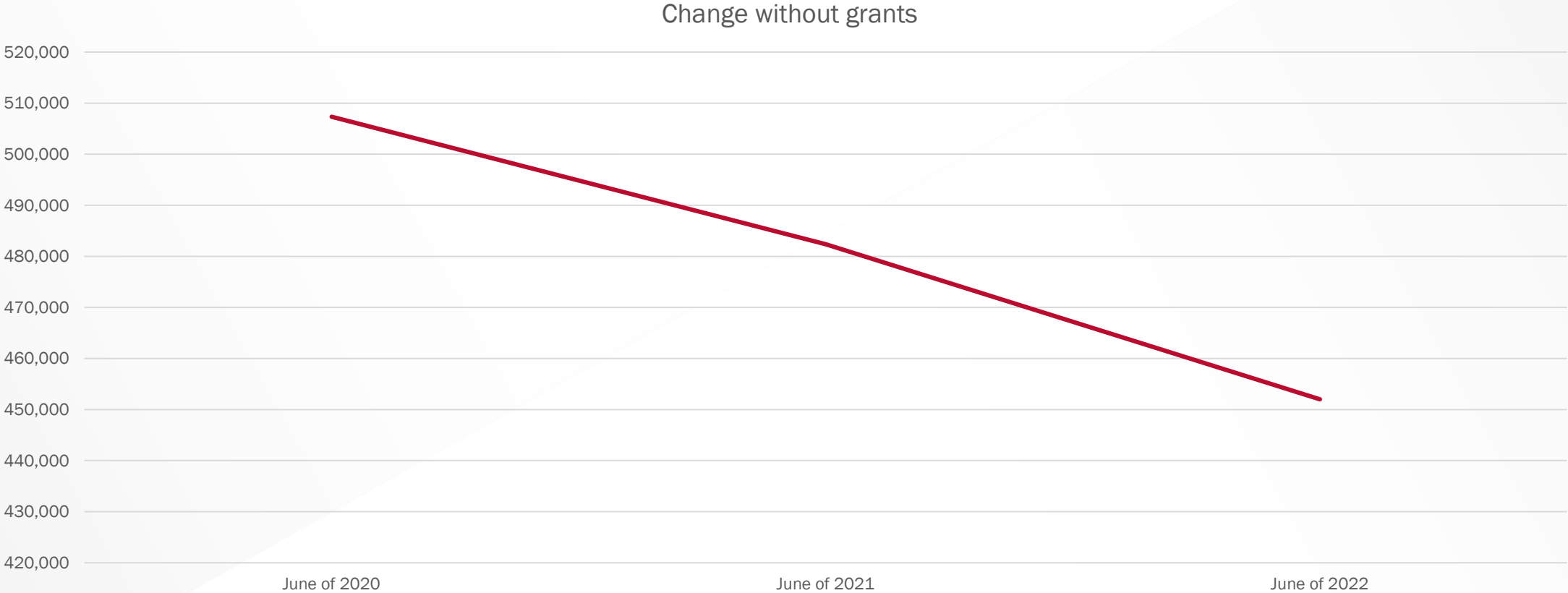
GBDI + NTIA + USDA + RDOF + ARPA + CPF Round 1



GBDI + NTIA + USDA + RDOF + ARPA + CPF Round 1 + CPF Round 2

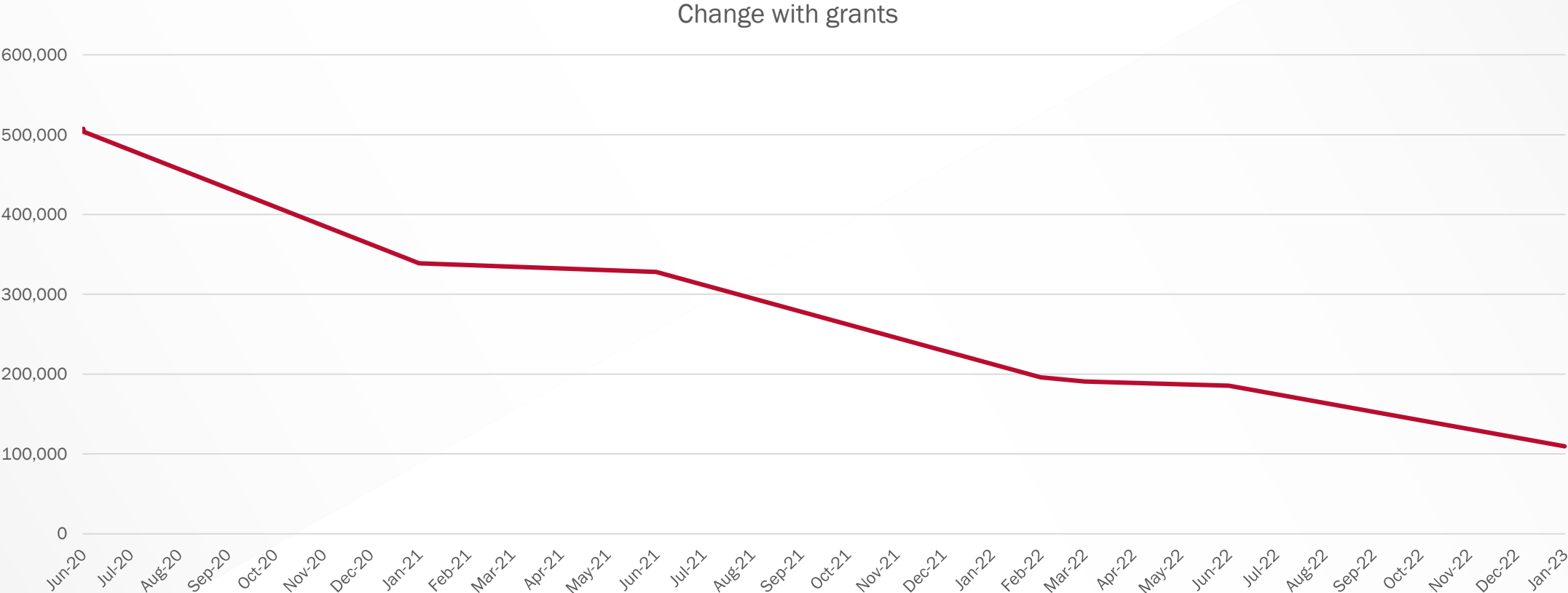


Change over time (without grants)



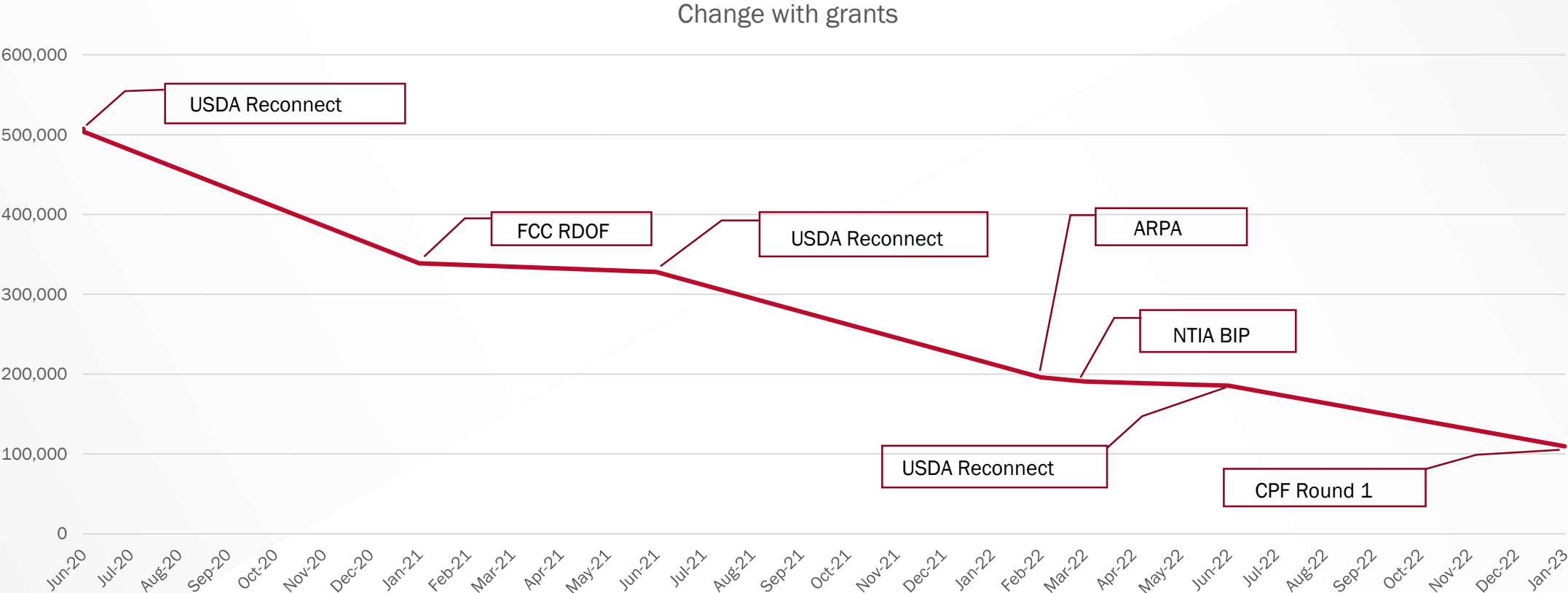
Change over time (with grants)

*Please note this is based on 2020 location counts



Change over time (with grants)

*Please note this is based on 2020 location counts



Georgia's Growing Population

The number of locations in the state of Georgia is in a constant flux. Homes and businesses are being built as well as demolished on a daily basis.

The served/unserved numbers change constantly as well since providers are increasing and decreasing their networks on a daily basis.

Currently, it is estimated that the total number of unserved locations after grants in Georgia is approximately 199,000 locations.



Dollars brought into Georgia

\$1,060,541,391 has been brought into Georgia, not including provider match dollars

\$418,541,391 was directed either local grant applicants or direct federal funding (no state input)

\$642,000,000 was provided by the federal government but dollars were directed by the state



Numbers in Georgia

Federal programs without state input have funded 189,877 unserved locations throughout the state

Programs that the state directed the federal dollars have funded 208,050 unserved locations

Two remaining programs included Capital Project Funds Round 2 and Broadband Equity, Access, and Deployment (BEAD) Program



Eric McRae emcrae@uga.edu



**facebook.com
/VinsonInstitute**



**Carl Vinson
Institute of Government**



@CVIOG_UGA



www.cviog.uga.edu